

PE Rabbit anti-Human CD152/CTLA-4 mAb

Catalog No.: A23713

Basic Information

Observed MW**Calculated MW**

6kDa/8kDa/19kDa/24kDa

Category

Primary antibody

Applications

FC

Cross-Reactivity

Human

CloneNo number

ARC57384

Conjugate

PE. Ex:565nm. Em:574nm.

Background

This gene is a member of the immunoglobulin superfamily and encodes a protein which transmits an inhibitory signal to T cells. The protein contains a V domain, a transmembrane domain, and a cytoplasmic tail. Alternate transcriptional splice variants, encoding different isoforms, have been characterized. The membrane-bound isoform functions as a homodimer interconnected by a disulfide bond, while the soluble isoform functions as a monomer. Mutations in this gene have been associated with insulin-dependent diabetes mellitus, Graves disease, Hashimoto thyroiditis, celiac disease, systemic lupus erythematosus, thyroid-associated orbitopathy, and other autoimmune diseases.

Recommended Dilutions

FC 5 µl per 10⁶ cells in
100 µl volume

Immunogen Information

Gene ID

1493

Swiss Prot

P16410

Immunogen

Recombinant protein (or fragment). This information is considered to be commercially sensitive.

Synonyms

CD; GSE; GRD4; ALPS5; CD152; CTLA-4; IDDM12; CELIAC3

Contact

 | 400-999-6126

 | cn.market@abclonal.com.cn

 | www.abclonal.com.cn

Product Information

Source

Rabbit

Isotype

IgG

Purification

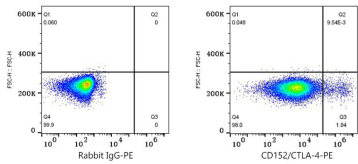
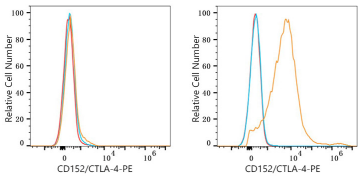
Affinity purification

Storage

Store at 2-8°C. Avoid freeze.

Buffer: PBS containing 0.2% BSA, preserved with proclin300 or sodium azide (as specified on the Certificate of Analysis), pH 7.3.

Validation Data



Flow cytometry: 1X10⁶ 293F cells(negative control,left) and 293F(Transfection, right) cells were surface-stained with PE Rabbit anti-Human CD152/CTLA-4 mAb(A23713,5 μl/Test,orange line) or PE Rabbit IgG isotype control (5 μl/Test,blue line).Non-fluorescently stained cells was used as blank control (red line).

Flow cytometry:1X10⁶ 293F(Transfection) cells were surface-stained with PE Rabbit IgG isotype control (5 μl/Test,left) or PE Rabbit anti-Human CD152/CTLA-4 mAb(A23713,5 μl/Test,right).