

TriMethyl-Histone H4-K20 Rabbit pAb

Catalog No.: A2372

8 Publications

Basic Information

Observed MW

11kDa

Calculated MW

11kDa

Category

Primary antibody

Applications

WB,DB,IHC-P,IF/ICC,ELISA

Cross-Reactivity

Human, Mouse, Rat, Other (Wide Range Predicted)

Background

Histones are basic nuclear proteins that are responsible for the nucleosome structure of the chromosomal fiber in eukaryotes. This structure consists of approximately 146 bp of DNA wrapped around a nucleosome, an octamer composed of pairs of each of the four core histones (H2A, H2B, H3, and H4). The chromatin fiber is further compacted through the interaction of a linker histone, H1, with the DNA between the nucleosomes to form higher order chromatin structures. This gene is intronless and encodes a replication-dependent histone that is a member of the histone H4 family. Transcripts from this gene lack polyA tails; instead, they contain a palindromic termination element. This gene is found in a histone cluster on chromosome 1. This gene is one of four histone genes in the cluster that are duplicated; this record represents the centromeric copy.

Recommended Dilutions

WB 1:500 - 1:2000**DB** 1:500 - 1:2000**IHC-P** 1:50 - 1:200**IF/ICC** 1:50 - 1:200**ELISA** Recommended starting concentration is 1 µg/mL. Please optimize the concentration based on your specific assay requirements.

Immunogen Information

Gene ID

8359

Swiss Prot

P62805


Immunogen

Synthetic peptide. This information is considered to be commercially sensitive.

Synonyms

H4; H4/n; H4C1; H4C2; H4C3; H4C4; H4C5; H4C6; H4C8; H4C9; H4F2; H4FN; FO108; H4-16; H4C11; H4C12; H4C13; H4C15; H4C16; HIST2H4; HIST2H4A; TriMethyl-Histone H4-K20

Contact

 | 400-999-6126 | cn.market@abclonal.com.cn | www.abclonal.com.cn

Product Information

Source

Rabbit

Isotype

IgG

Purification

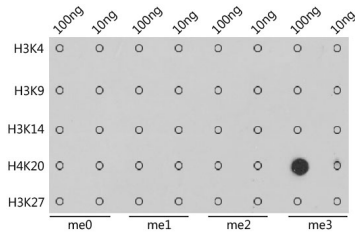
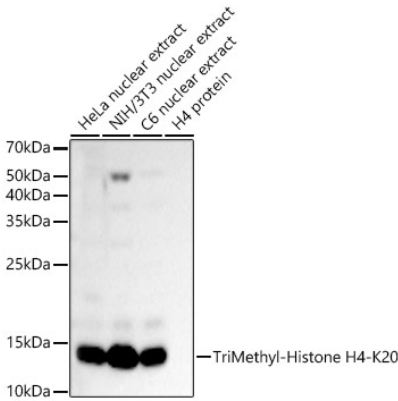
Affinity purification

Storage

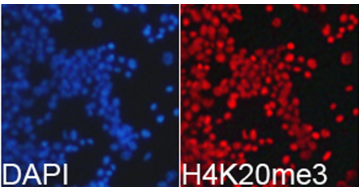
Store at -20°C. Avoid freeze / thaw cycles.

Buffer: PBS with 0.02% sodium azide, 50% glycerol, pH7.3.

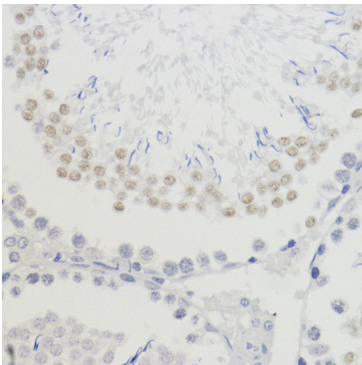
Validation Data



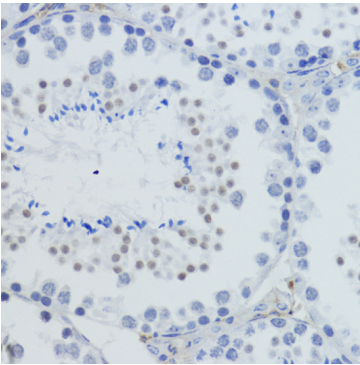
Dot-blot analysis of all sorts of methylation peptides using TriMethyl-Histone H4-K20 antibody (A2372).



Immunofluorescence analysis of 293T cells using TriMethyl-Histone H4-K20 Rabbit pAb (A2372). Blue: DAPI for nuclear staining.



Immunohistochemistry analysis of paraffin-embedded Rat testis using TriMethyl-Histone H4-K20 Rabbit pAb (A2372) at dilution of 1:200 (40x lens). Microwave antigen retrieval performed with 0.01M PBS Buffer (pH 7.2) prior to IHC staining.



Immunohistochemistry analysis of paraffin-embedded Mouse testis using TriMethyl-Histone H4-K20 Rabbit pAb (A2372) at dilution of 1:200 (40x lens). Microwave antigen retrieval performed with 0.01M PBS Buffer (pH 7.2) prior to IHC staining.