

ABflo® 488 Rabbit anti-Human MMP9 mAb

Catalog No.: A23732 **1 Publications**

Basic Information

Observed MW

Calculated MW

78kDa

Category

Primary antibody

Applications

FC (intra)

Cross-Reactivity

Human

CloneNo number

ARC60377

Conjugate

ABflo® 488. Ex:491nm. Em:516nm.

Background

Proteins of the matrix metalloproteinase (MMP) family are involved in the breakdown of extracellular matrix in normal physiological processes, such as embryonic development, reproduction, and tissue remodeling, as well as in disease processes, such as arthritis and metastasis. Most MMP's are secreted as inactive proproteins which are activated when cleaved by extracellular proteinases. The enzyme encoded by this gene degrades type IV and V collagens. Studies in rhesus monkeys suggest that the enzyme is involved in IL-8-induced mobilization of hematopoietic progenitor cells from bone marrow, and murine studies suggest a role in tumor-associated tissue remodeling.

Recommended Dilutions

FC (intra) 5 µl per 10⁶ cells in
100 µl volume

Immunogen Information

Gene ID

4318

Swiss Prot

P14780

Immunogen

Recombinant protein (or fragment). This information is considered to be commercially sensitive.

Synonyms

MMP9; CLG4B; GELB; MANDP2; MMP-9; matrix metalloproteinase 9

Contact

☎ | 400-999-6126

✉ | cn.market@abclonal.com.cn

🌐 | www.abclonal.com.cn

Product Information

Source

Rabbit

Isotype

IgG

Purification

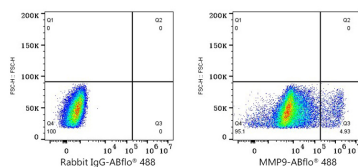
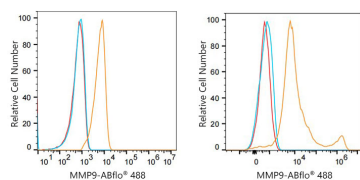
Affinity purification

Storage

Store at 2-8°C. Avoid freeze.

Buffer: PBS containing 0.2% BSA, preserved with proclin300 or sodium azide (as specified on the Certificate of Analysis), pH 7.3.

Validation Data



Flow cytometry: 1X10⁶ 293T cells(Low Expression,left) and 293T(Transfection,right) cells were intracellularly-stained with ABflo® 488 Rabbit anti-Human MMP9 mAb(A23732,5 µl/Test,orange line) or ABflo® 488 Rabbit IgG isotype control (A22069,5 µl/Test,blue line).Non-fluorescently stained cells were used as blank control (red line).

Flow cytometry:1X10⁶ 293T(Transfection) cells were intracellularly-stained with ABflo® 488 Rabbit IgG isotype control (A22069,5 µl/Test,left) or ABflo® 488 Rabbit anti-Human MMP9 mAb(A23732,5 µl/Test,right).