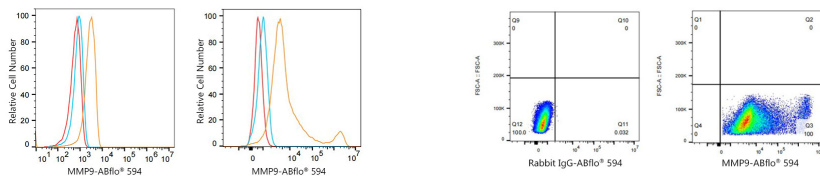


Validation Data



Flow cytometry: 1×10^6 293T cells (Low Expression, left) and 293T (Transfection, right) cells were intracellularly-stained with ABflo® 594 Rabbit anti-Human MMP9 mAb (A23734, 5 μ l/Test, orange line) or ABflo® 594 Rabbit IgG isotype control (A23821, 5 μ l/Test, blue line). Non-fluorescently stained cells were used as blank control (red line).

Flow cytometry: 1×10^6 293T (Transfection) cells were intracellularly-stained with ABflo® 594 Rabbit IgG isotype control (A23821, 5 μ l/Test, left) or ABflo® 594 Rabbit anti-Human MMP9 mAb (A23734, 5 μ l/Test, right).