

ABflo® 647 Rabbit anti-Mouse CD68 mAb

Catalog No.: A23739

Basic Information

Observed MW

Calculated MW

33KDa/34KDa

Category

Primary antibody

Applications

IF/ICC,FC

Cross-Reactivity

Mouse

CloneNo number

ARC60987

Conjugate

ABflo® 647. Ex:648nm. Em:664nm.

Background

Involved in several processes, including cellular response to lipopolysaccharide; cellular response to oxidised low-density lipoprotein particle stimulus; and negative regulation of dendritic cell antigen processing and presentation. Acts upstream of or within aging and cellular response to organic substance. Located in lysosome and plasma membrane. Is expressed in several structures, including central nervous system; embryo mesenchyme; heart blood vessel; liver; and spleen. Orthologous to human CD68 (CD68 molecule).

Recommended Dilutions

IF/ICC 1:25 - 1:200

FC 5 µl per 10⁶ cells in
100 µl volume

Immunogen Information

Gene ID

12514

Swiss Prot

P31996

Immunogen

Recombinant protein (or fragment). This information is considered to be commercially sensitive.

Synonyms

Lamp4; gp110; Scard1

Contact

☎ | 400-999-6126

✉ | cn.market@abclonal.com.cn

🌐 | www.abclonal.com.cn

Product Information

Source

Rabbit

Isotype

IgG

Purification

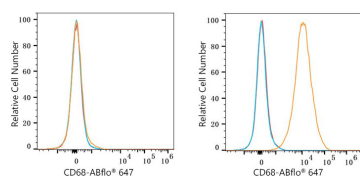
Affinity purification

Storage

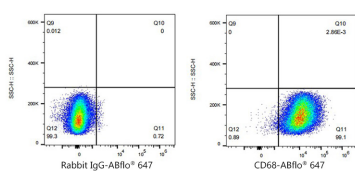
Store at 2-8°C. Avoid freeze.

Buffer: PBS containing 0.2% BSA, preserved with proclin300 or sodium azide (as specified on the Certificate of Analysis), pH 7.3.

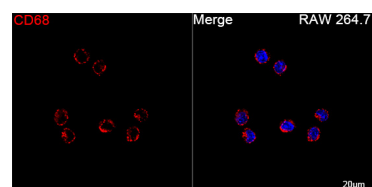
Validation Data



Flow cytometry: 1×10^6 NIH/3T3 cells (negative control, left) and Raw264.7 cells (right) were surface-stained with ABflo® 647 Rabbit anti-Mouse CD68 mAb (A23739, 5 μ l/Test, orange line) or ABflo® 647 Rabbit IgG isotype control (A22070, 5 μ l/Test, blue line). Non-fluorescently stained cells were used as blank control (red line).



Flow cytometry: 1×10^6 Raw264.7 cells were surface-stained with ABflo® 647 Rabbit IgG isotype control (A22070, 5 μ l/Test, left) or ABflo® 647 Rabbit anti-Mouse CD68 mAb (A23739, 5 μ l/Test, right).



Confocal imaging of RAW 264.7 cells using ABflo® 647 Rabbit anti-Mouse CD68 mAb (A23739, dilution 1:25). DAPI was used for nuclear staining (Blue). Objective: 100x.