

ABflo® 647 Rabbit anti-Human CD200/OX2 mAb

Catalog No.: A23742

Basic Information

Observed MW

Calculated MW

30kDa/31kDa/32kDa

Category

Primary antibody

Applications

FC

Cross-Reactivity

Human

CloneNo number

ARC60912-ABf647

Conjugate

ABflo® 647. Ex:648nm. Em:664nm.

Recommended Dilutions

FC 5 µl per 10⁶ cells in
100 µl volume

Background

This gene encodes a type I membrane glycoprotein containing two extracellular immunoglobulin domains, a transmembrane and a cytoplasmic domain. This gene is expressed by various cell types, including B cells, a subset of T cells, thymocytes, endothelial cells, and neurons. The encoded protein plays an important role in immunosuppression and regulation of anti-tumor activity. Alternative splicing results in multiple transcript variants encoding different isoforms.

Immunogen Information

Gene ID

4345

Swiss Prot

P41217

Immunogen

Recombinant fusion protein containing a sequence corresponding to amino acids 31-232 of human CD200/OX2 (NP_001352780.1).

Synonyms

CD200; MOX1; MOX2; MRC; OX-2; CD200 molecule

Contact

☎ | 400-999-6126

✉ | cn.market@abclonal.com.cn

🌐 | www.abclonal.com.cn

Product Information

Source

Rabbit

Isotype

IgG

Purification

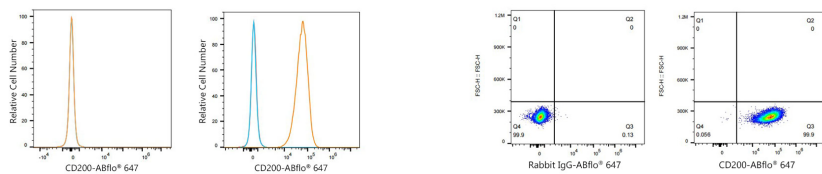
Affinity purification

Storage

Store at 2-8°C. Avoid freeze.

Buffer: PBS with 0.03% proclin300,0.2% BSA,pH7.3.

Validation Data



Flow cytometry: 1×10^6 Jurkat cells (negative control, left) and SK-MEL-28 cells (right) were surface-stained with ABflo® 647 Rabbit anti-Human CD200/OX2 mAb (A23742, 5 μ l/Test, orange line) or ABflo® 647 Rabbit IgG isotype control (A22070, 5 μ l/Test, blue line). Non-fluorescently stained cells were used as blank control (red line).

Flow cytometry: 1×10^6 SK-MEL-28 cells were surface-stained with ABflo® 647 Rabbit IgG isotype control (A22070, 5 μ l/Test, left) or ABflo® 647 Rabbit anti-Human CD200/OX2 mAb (A23742, 5 μ l/Test, right).