

# ABflo® 647 Rabbit anti-Human CD239/BCAM mAb

Catalog No.: A23745

## Basic Information

### Observed MW

**Calculated MW**  
67kDa

**Category**  
Primary antibody

**Applications**  
FC

**Cross-Reactivity**  
Human

**CloneNo number**  
ARC61168-ABf647

**Conjugate**  
ABflo® 647. Ex:648nm. Em:664nm.

## Background

This gene encodes Lutheran blood group glycoprotein, a member of the immunoglobulin superfamily and a receptor for the extracellular matrix protein, laminin. The protein contains five extracellular immunoglobulin domains, a single transmembrane domain, and a short C-terminal cytoplasmic tail. This protein may play a role in epithelial cell cancer and in vaso-occlusion of red blood cells in sickle cell disease. Polymorphisms in this gene define some of the antigens in the Lutheran system and also the Auberger system. Inactivating variants of this gene result in the recessive Lutheran null phenotype, Lu(a-b-), of the Lutheran blood group. Two transcript variants encoding different isoforms have been found for this gene.

## Recommended Dilutions

**FC** 5 µl per 10<sup>6</sup> cells in  
100 µl volume

## Immunogen Information

<b>Gene ID</b> 4059	<b>Swiss Prot</b> P50895
------------------------	-----------------------------

### Immunogen

Recombinant fusion protein containing a sequence corresponding to amino acids 32-547 of human CD239/BCAM (NP\_005572.2).

### Synonyms

BCAM; AU; CD239; LU; MSK19; basal cell adhesion molecule

## Contact

☎		400-999-6126
✉		cn.market@abclonal.com.cn
🌐		www.abclonal.com.cn

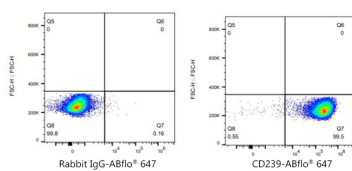
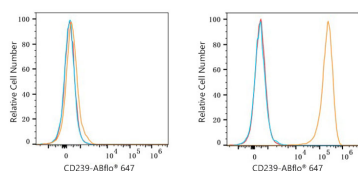
## Product Information

<b>Source</b> Rabbit	<b>Isotype</b> IgG	<b>Purification</b> Affinity purification
-------------------------	-----------------------	--

### Storage

Store at 2-8°C. Avoid freeze.  
Buffer: PBS with 0.03% proclin300,0.2% BSA,pH7.3.

## Validation Data



Flow cytometry:  $1 \times 10^6$  SH-SY5Y cells (Low Expression, left) and SK-BR-3 cells (right) were surface-stained with ABflo® 647 Rabbit anti-Human CD239/BCAM mAb (A23745, 5  $\mu$ l/Test, orange line) or ABflo® 647 Rabbit IgG isotype control (A22070, 5  $\mu$ l/Test, blue line). Non-fluorescently stained cells were used as blank control (red line).

Flow cytometry:  $1 \times 10^6$  SK-BR-3 cells were surface-stained with ABflo® 647 Rabbit IgG isotype control (A22070, 5  $\mu$ l/Test, left) or ABflo® 647 Rabbit anti-Human CD239/BCAM mAb (A23745, 5  $\mu$ l/Test, right).