

# PE Rabbit anti-Mouse CD56/NCAM mAb

Catalog No.: A23749

## Basic Information

### Observed MW

### Calculated MW

67KDa/80KDa/93KDa/119KDa

### Category

Primary antibody

### Applications

FC

### Cross-Reactivity

Mouse

### CloneNo number

ARC60214-PE

### Conjugate

PE. Ex:565nm. Em:574nm.

## Recommended Dilutions

FC 5  $\mu$ l per  $10^6$  cells in  
100  $\mu$ l volume

## Background

Predicted to enable LRR domain binding activity and phosphatase binding activity. Involved in commissural neuron axon guidance and regulation of semaphorin-plexin signaling pathway. Acts upstream of or within several processes, including homotypic cell-cell adhesion; positive regulation of calcium-mediated signaling; and regulation of exocyst assembly. Located in several cellular components, including external side of plasma membrane; growth cone; and neuronal cell body. Is expressed in several structures, including embryo mesenchyme; nervous system; sensory organ; skin; and urinary system. Human ortholog(s) of this gene implicated in bipolar disorder; middle cerebral artery infarction; and pancreatic cancer. Orthologous to human NCAM1 (neural cell adhesion molecule 1).

## Immunogen Information

### Gene ID

17967

### Swiss Prot

P13595

### Immunogen

Recombinant fusion protein containing a sequence corresponding to amino acids 20-711 of mouse CD56/NCAM (NP\_001106675.1).

### Synonyms

CD56; Ncam; E-NCAM; NCAM-1

## Contact

☎ | 400-999-6126

✉ | [cn.market@abclonal.com.cn](mailto:cn.market@abclonal.com.cn)

🌐 | [www.abclonal.com.cn](http://www.abclonal.com.cn)

## Product Information

### Source

Rabbit

### Isotype

IgG

### Purification

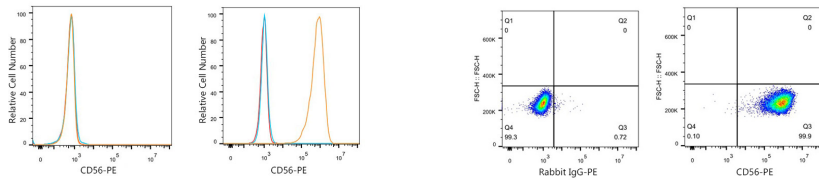
Affinity purification

### Storage

Store at 2-8°C. Avoid freeze.

Buffer: PBS with 0.03% proclin300,0.2% BSA,pH7.3.

## Validation Data



Flow cytometry:  $1 \times 10^6$  L-929 cells (negative control, left) and Neuro-2a cells (right) were surface-stained with PE Rabbit anti-Mouse CD56/NCAM mAb (A23749, 5  $\mu$ l/Test, orange line) or PE Rabbit IgG isotype control (5  $\mu$ l/Test, blue line). Non-fluorescently stained cells were used as blank control (red line).

Flow cytometry:  $1 \times 10^6$  Neuro-2a cells were surface-stained with PE Rabbit IgG isotype control (5  $\mu$ l/Test, left) or PE Rabbit anti-Mouse CD56/NCAM mAb (A23749, 5  $\mu$ l/Test, right).