

KLHDC2 Rabbit mAb

Catalog No.: A23751 **Recombinant**

Basic Information

Observed MW

46kDa

Calculated MW

28kDa/46kDa

Category

Primary antibody

Applications

ELISA, WB, IHC-P

Cross-Reactivity

Human, Mouse

CloneNo number

ARC60813

Background

Enables ubiquitin ligase-substrate adaptor activity. Involved in ubiquitin-dependent protein catabolic process via the C-end degron rule pathway. Located in nuclear body and nuclear membrane. Is active in Cul2-RING ubiquitin ligase complex and nucleus.

Recommended Dilutions

WB 1:500 - 1:1000

IHC-P 1:50 - 1:200

Immunogen Information

Gene ID

23588

Swiss Prot

Q9Y2U9

Immunogen

A synthetic peptide corresponding to a sequence within amino acids 306-406 of human KLHDC2. (NP_055130.1).

Synonyms

KLHDC2; HCLP-1; HCLP1; LCP; kelch domain containing 2

Contact

☎ | 400-999-6126

✉ | cn.market@abclonal.com.cn

🌐 | www.abclonal.com.cn

Product Information

Source

Rabbit

Isotype

IgG

Purification

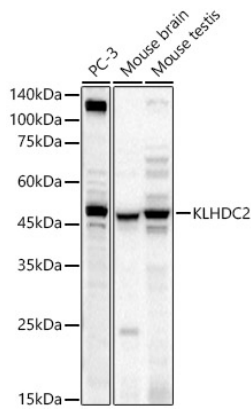
Affinity purification

Storage

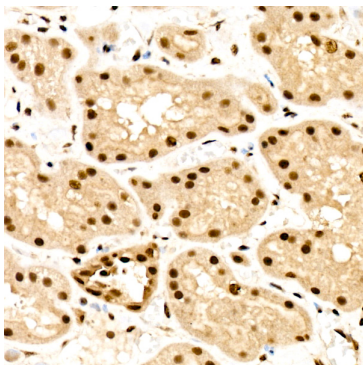
Store at -20°C. Avoid freeze / thaw cycles.

Buffer: PBS with 0.05% proclin300, 0.05% BSA, 50% glycerol, pH7.3.

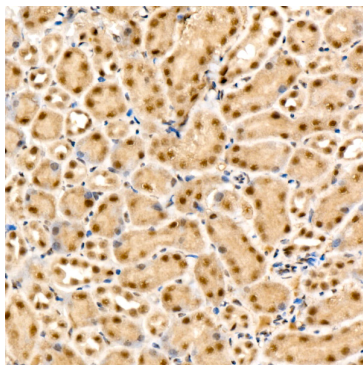
Validation Data



Western blot analysis of various lysates, using KLHDC2 Rabbit mAb (A23751) at 1:1000 dilution. Secondary antibody: HRP Goat Anti-Rabbit IgG (H+L) (AS014) at 1:10000 dilution. Lysates/proteins: 25µg per lane. Blocking buffer: 3% nonfat dry milk in TBST. Detection: ECL Basic Kit (RM00020). Exposure time: 45s.



Immunohistochemistry analysis of paraffin-embedded Human kidney using KLHDC2 Rabbit mAb (A23751) at dilution of 1:100 (40x lens). High pressure antigen retrieval performed with 0.01M Citrate Bufferr (pH 6.0) prior to IHC staining.



Immunohistochemistry analysis of paraffin-embedded Mouse kidney using KLHDC2 Rabbit mAb (A23751) at dilution of 1:100 (40x lens). High pressure antigen retrieval performed with 0.01M Citrate Bufferr (pH 6.0) prior to IHC staining.