

Gasdermin D (Full Length+C terminal) Rabbit mAb

Catalog No.: A23755 **Recombinant**

Basic Information

Observed MW

23kDa/53kDa

Calculated MW

53KDa

Category

Primary antibody

Applications

WB,ELISA

Cross-Reactivity

Human

CloneNo number

ARC61812

Background

Gasdermin D is a member of the gasdermin family. Members of this family appear to play a role in regulation of epithelial proliferation. Gasdermin D has been suggested to act as a tumor suppressor. Alternatively spliced transcript variants have been described.

Recommended Dilutions

WB 1:2000 - 1:12000

ELISA Recommended starting concentration is 1 µg/mL. Please optimize the concentration based on your specific assay requirements.

Immunogen Information

Gene ID

79792

Swiss Prot

P57764

Immunogen

Recombinant fusion protein containing a sequence corresponding to amino acids 276-484 of human Gasdermin D(NP_079012.3)

Synonyms

DF5L; DFNA5L; FKSG10; GSDMDC1; Gasdermin D (Full Length+C terminal)

Contact

☎ | 400-999-6126

✉ | cn.market@abclonal.com.cn

🌐 | www.abclonal.com.cn

Product Information

Source

Rabbit

Isotype

IgG

Purification

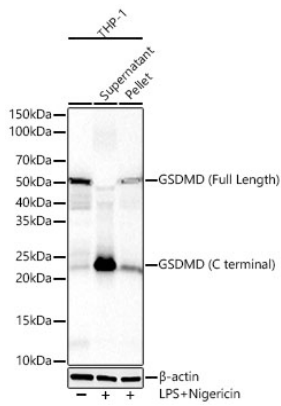
Affinity purification

Storage

Store at -20°C. Avoid freeze / thaw cycles.

Buffer: PBS with 0.09% Sodium azide,0.05% BSA,50% glycerol,pH7.3.

Validation Data



Western blot analysis of lysates from THP-1 cells using GSDMD (Full Length+C terminal) Rabbit mAb (A23755) at 1:2000 dilution. THP-1 cells were treated by LPS and Nigericin.

Secondary antibody: HRP-conjugated Goat anti-Rabbit IgG (H+L) (AS014) at 1:10000 dilution.

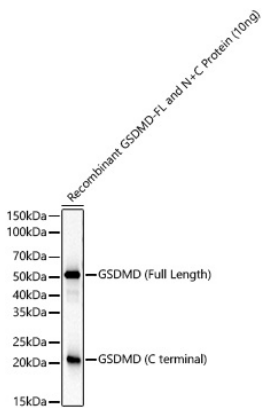
Lysates/proteins: 25 μ g per lane.

Blocking buffer: 3% nonfat dry milk in TBST.

Detection: ECL Basic Kit (RM00020).

Exposure time: 30s.

WB samples for antibody validation are kindly provided by Dr. Feng Shao, NIBS



Western blot analysis of recombinant GSDMD Protein using GSDMD (Full Length+C terminal) Rabbit mAb (A23755) at 1:2000 dilution.

Secondary antibody: HRP-conjugated Goat anti-Rabbit IgG (H+L) (AS014) at 1:10000 dilution.

Lysates/proteins: 10 ng per lane.

Blocking buffer: 3% nonfat dry milk in TBST.

Detection: ECL Basic Kit (RM00020).

Exposure time: 10s.

WB samples for antibody validation are kindly provided by Dr. Feng Shao, NIBS