

# SLC25A20 Rabbit mAb

Catalog No.: A23763 **Recombinant**

## Basic Information

### Observed MW

33kDa

### Calculated MW

32kDa

### Category

Primary antibody

### Applications

ELISA, WB

### Cross-Reactivity

Mouse, Rat

### CloneNo number

ARC59015

## Background

This gene product is one of several closely related mitochondrial-membrane carrier proteins that shuttle substrates between cytosol and the intramitochondrial matrix space. This protein mediates the transport of acylcarnitines into mitochondrial matrix for their oxidation by the mitochondrial fatty acid-oxidation pathway. Mutations in this gene are associated with carnitine-acylcarnitine translocase deficiency, which can cause a variety of pathological conditions such as hypoglycemia, cardiac arrest, hepatomegaly, hepatic dysfunction and muscle weakness, and is usually lethal in new born and infants.

## Recommended Dilutions

WB 1:500 - 1:1000

## Immunogen Information

### Gene ID

788

### Swiss Prot

O43772

### Immunogen

A synthetic peptide corresponding to a sequence within amino acids 1-100 of human SLC25A20. (NP\_000378.1).

### Synonyms

SLC25A20; CAC; CACT; solute carrier family 25 member 20

## Contact

☎ | 400-999-6126

✉ | [cn.market@abclonal.com.cn](mailto:cn.market@abclonal.com.cn)

🌐 | [www.abclonal.com.cn](http://www.abclonal.com.cn)

## Product Information

### Source

Rabbit

### Isotype

IgG

### Purification

Affinity purification

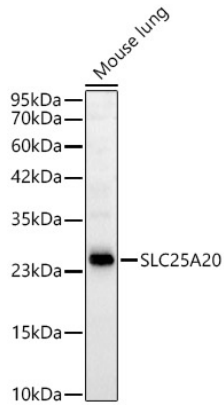
### Storage

Store at -20°C. Avoid freeze / thaw cycles.

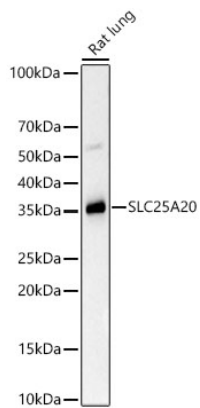
Buffer: PBS with 0.05% proclin300, 0.05% BSA, 50% glycerol, pH7.3.

## Validation Data

---



Western blot analysis of lysates from Mouse lung, using SLC25A20 Rabbit mAb (A23763) at 1:1000 dilution.  
Secondary antibody: HRP Goat Anti-Rabbit IgG (H+L) (AS014) at 1:10000 dilution.  
Lysates/proteins: 25µg per lane.  
Blocking buffer: 3% nonfat dry milk in TBST.  
Detection: ECL Basic Kit (RM00020).  
Exposure time: 3s.



Western blot analysis of lysates from Rat lung, using SLC25A20 Rabbit mAb (A23763) at 1:1000 dilution.  
Secondary antibody: HRP Goat Anti-Rabbit IgG (H+L) (AS014) at 1:10000 dilution.  
Lysates/proteins: 25ug per lane.  
Blocking buffer: 3% nonfat dry milk in TBST.  
Detection: ECL Basic Kit (RM00020).  
Exposure time: 180s.