

SARS-CoV-2 Spike RBD Mouse mAb

Catalog No.: A23771

Basic Information

Observed MW

30kDa

Calculated MW

Category

Primary antibody

Applications

WB,DB,IF/ICC,(ELISA)

Cross-Reactivity

SARS-CoV-2

CloneNo number

AMC0346R

Background

Severe acute respiratory syndrome coronavirus 2 (SARS-CoV-2) is an enveloped, positive-sense, single-stranded RNA virus that causes coronavirus disease 2019 (COVID-19). Virus particles include the RNA genetic material and structural proteins needed for invasion of host cells. Once inside the cell the infecting RNA is used to encode structural proteins that make up virus particles, nonstructural proteins that direct virus assembly, transcription, replication and host control and accessory proteins whose function has not been determined.~ The structural proteins of SARS-CoV-2 include the envelope protein (E), spike or surface glycoprotein (S), membrane protein (M) and the nucleocapsid protein (N). The spike glycoprotein is found on the outside of the virus particle and gives coronavirus viruses their crown-like appearance. This glycoprotein mediates attachment of the virus particle and entry into the host cell. S protein is an important target for vaccine development, antibody therapies and diagnostic antigen-based tests.

Recommended Dilutions

WB 1:500 - 1:1000

DB 1:500 - 1:2000

IF/ICC 1:50 - 1:200

ELISA Recommended starting concentration is 1 µg/mL. Please optimize the concentration based on your specific assay requirements.

Immunogen Information

Gene ID

43740568

Swiss Prot

Immunogen

Recombinant fusion protein of SARS-CoV-2 CoV spike RBD.

Synonyms

spike glycoprotein; SARS-CoV-2 Spike RBD

Contact

 | 400-999-6126

 | cn.market@abclonal.com.cn

 | www.abclonal.com.cn

Product Information

Source

Mouse

Isotype

IgG2b,kappa

Purification

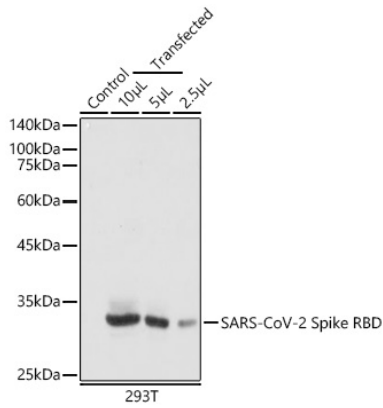
Affinity purification

Storage

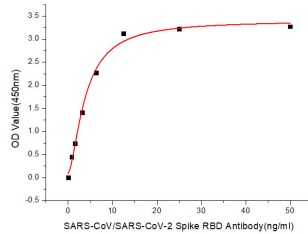
Store at -20°C. Avoid freeze / thaw cycles.

Buffer: PBS with 0.05% proclin300, 50% glycerol, pH7.3.

Validation Data



Western blot analysis of lysates from wild type (WT) and 293T cells transfected with SARS-CoV-2 Spike RBD using SARS-CoV-2 Spike RBD Mouse mAb (A23771) at 1:500 dilution.
Secondary antibody:HRP Goat Anti-Mouse IgG (H+L)(AS003) at 1:10000 dilution.
Lysates/proteins: 25 µg per lane.
Blocking buffer: 3% nonfat dry milk in TBST.
Detection: ECL Basic Kit (RM00020).
Exposure time: 10s.



Immobilized Recombinant SARS-CoV-2 Spike RBD Protein (RP01278LQ) at 1µg/mL (100µL/well) can bind SARS-CoV-2 Spike RBD mAb (A23771) with a linear range of 0.78-50ng/mL.