

GABARAPL1 Rabbit mAb

Catalog No.: A23781 **Recombinant**

Basic Information

Observed MW

16-18kDa

Calculated MW

14kDa/17kDa

Category

Primary antibody

Applications

ELISA, WB, IHC-P

Cross-Reactivity

Human, Mouse, Rat

CloneNo number

ARC61739

Background

Enables Tat protein binding activity and ubiquitin protein ligase binding activity. Predicted to be involved in autophagosome assembly; autophagy of mitochondrion; and cellular response to nitrogen starvation. Located in autophagosome. Colocalizes with mitochondrion.

Recommended Dilutions

WB	1:1000 - 1:2000
IHC-P	1:100 - 1:500

Immunogen Information

Gene ID

23710

Swiss Prot

Q9H0R8

Immunogen

A synthetic peptide corresponding to a sequence within amino acids 1-100 of human GABARAPL1. (NP_113600.1).

Synonyms

GABARAPL1; APG8-LIKE; APG8L; ATG8; ATG8B; ATG8L; GEC1; GABA type A receptor associated protein like 1

Contact

 | 400-999-6126

 | cn.market@abclonal.com.cn

 | www.abclonal.com.cn

Product Information

Source

Rabbit

Isotype

IgG

Purification

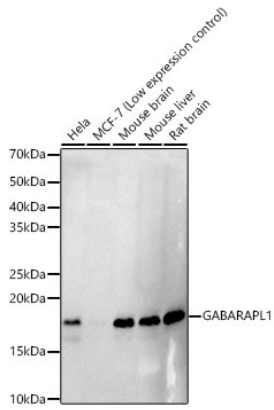
Affinity purification

Storage

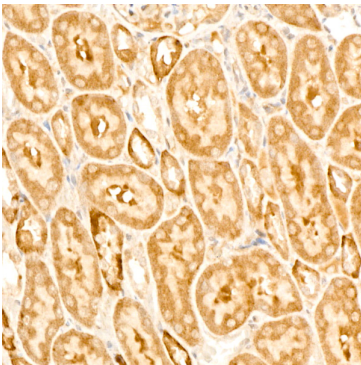
Store at -20°C. Avoid freeze / thaw cycles.

Buffer: PBS with 0.05% proclin300, 0.05% BSA, 50% glycerol, pH7.3.

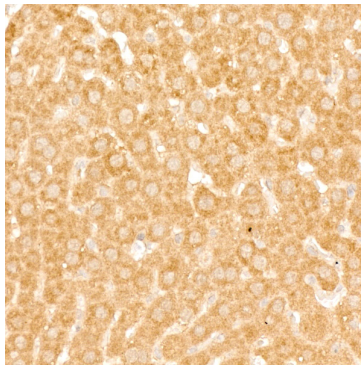
Validation Data



Western blot analysis of various lysates, using GABARAPL1 Rabbit mAb (A23781) at 1:2000 dilution. Secondary antibody: HRP Goat Anti-Rabbit IgG (H+L) (AS014) at 1:10000 dilution. Lysates/proteins: 25µg per lane. Blocking buffer: 3% nonfat dry milk in TBST. Detection: ECL Basic Kit (RM00020). Exposure time: 90s.



Immunohistochemistry analysis of paraffin-embedded Rat kidney using GABARAPL1 Rabbit mAb (A23781) at dilution of 1:300 (40x lens). High pressure antigen retrieval performed with 0.01M Citrate Bufferr (pH 6.0) prior to IHC staining.



Immunohistochemistry analysis of paraffin-embedded Rat liver using GABARAPL1 Rabbit mAb (A23781) at dilution of 1:300 (40x lens). High pressure antigen retrieval performed with 0.01M Citrate Bufferr (pH 6.0) prior to IHC staining.