

CD244 Rabbit mAb

Catalog No.: A23783 **Recombinant**

Basic Information

Observed MW

70-120kDa

Calculated MW

30kDa/36kDa/41kDa

Category

Primary antibody

Applications

ELISA, WB, FC

Cross-Reactivity

Human

CloneNo number

ARC61963

Background

This gene encodes a cell surface receptor expressed on natural killer (NK) cells (and some T cells) that mediate non-major histocompatibility complex (MHC) restricted killing. The interaction between NK-cell and target cells via this receptor is thought to modulate NK-cell cytolytic activity. Alternatively spliced transcript variants encoding different isoforms have been found for this gene.

Recommended Dilutions

| | |
|-----------|----------------|
| WB | 1:500 - 1:1000 |
| FC | 1:500 - 1:1000 |

Immunogen Information

Gene ID

51744

Swiss Prot

Q9BZW8

Immunogen

Recombinant Protein corresponding to a sequence within amino acids 22-221 of human CD244 (NP_001160135.1).

Synonyms

CD244; 2B4; NAIL; NKR2B4; Nmrk; SLAMF4; CD244 molecule

Contact

☎ | 400-999-6126

✉ | cn.market@abclonal.com.cn

🌐 | www.abclonal.com.cn

Product Information

Source

Rabbit

Isotype

IgG

Purification

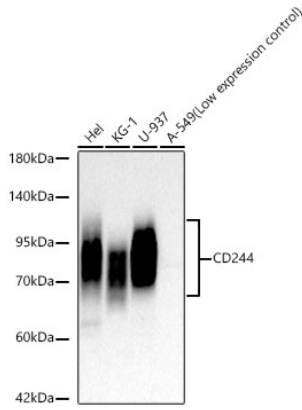
Affinity purification

Storage

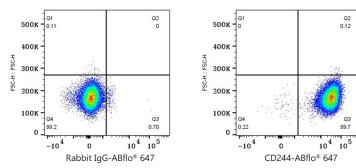
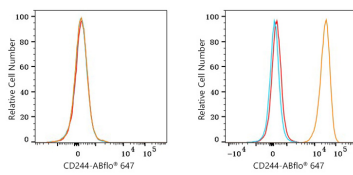
Store at -20°C. Avoid freeze / thaw cycles.

Buffer: PBS with 0.05% proclin300, 0.05% BSA, 50% glycerol, pH7.3.

Validation Data



Western blot analysis of various lysates, using CD244 Rabbit mAb (A23783) at 1:1000 dilution.
 Secondary antibody: HRP-conjugated Goat anti-Rabbit IgG (H+L) (AS014) at 1:10000 dilution.
 Lysates/proteins: 25µg per lane.
 Blocking buffer: 3% nonfat dry milk in TBST.
 Detection: ECL Basic Kit (RM00020).
 Exposure time: 60s.



Flow cytometry: 1×10^6 K-562 cells (negative control, left) and HEL cells (right) were surface-stained with CD244 Rabbit mAb (A23783, 2 µg/mL, orange line) or Rabbit IgG isotype control (AC042, 2 µg/mL, blue line), followed by Alexa Fluor® 647 conjugated goat anti-rabbit pAb staining. Non-fluorescently stained cells were used as blank control (red line).

Flow cytometry: 1×10^6 HEL cells were surface-stained with Rabbit IgG isotype control (AC042, 2 µg/mL, left) or CD244 Rabbit mAb (A23783, 2 µg/mL, right), followed by Alexa Fluor® 647 conjugated goat anti-rabbit pAb staining.