

ABflo® 647 Rabbit anti-Human CD352/SLAMF6 mAb

Catalog No.: A23799

Basic Information

Observed MW

Calculated MW

24kDa/37kDa

Category

Primary antibody

Applications

FC

Cross-Reactivity

Human

CloneNo number

ARC60903-ABflo647

Conjugate

ABflo® 647. Ex:648nm. Em:664nm.

Recommended Dilutions

FC 5 µl per 10⁶ cells in
100 µl volume

Background

The protein encoded by this gene is a type I transmembrane protein, belonging to the CD2 subfamily of the immunoglobulin superfamily. This encoded protein is expressed on Natural killer (NK), T, and B lymphocytes. It undergoes tyrosine phosphorylation and associates with the Src homology 2 domain-containing protein (SH2D1A) as well as with SH2 domain-containing phosphatases (SHPs). It functions as a coreceptor in the process of NK cell activation. It can also mediate inhibitory signals in NK cells from X-linked lymphoproliferative patients. Alternative splicing results in multiple transcript variants encoding distinct isoforms.

Immunogen Information

Gene ID

114836

Swiss Prot

Q96DU3

Immunogen

Recombinant fusion protein containing a sequence corresponding to amino acids 24-215 of human CD352/SLAMF6 (NP_001171643.1)

Synonyms

SLAMF6; CD352; KALI; KALiB; Ly108; NTB-A; NTBA; SF2000; SLAM family member 6

Contact

☎ | 400-999-6126

✉ | cn.market@abclonal.com.cn

🌐 | www.abclonal.com.cn

Product Information

Source

Rabbit

Isotype

IgG

Purification

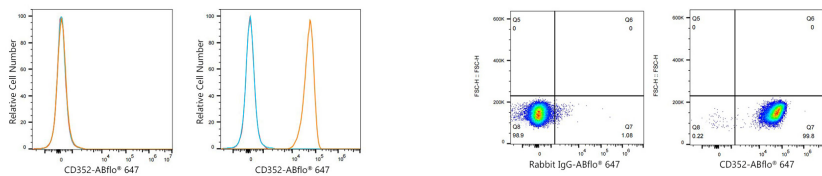
Affinity purification

Storage

Store at 2-8°C. Avoid freeze.

Buffer: PBS with 0.03% proclin300,0.2% BSA,pH7.3.

Validation Data



Flow cytometry: 1×10^6 HAP1 cells (negative control, left) and Daudi cells (right) were surface-stained with ABflo® 647 Rabbit anti-Human CD352/SLAMF6 mAb (A23799, 5 μ l/Test, orange line) or ABflo® 647 Rabbit IgG isotype control (A22070, 5 μ l/Test, blue line). Non-fluorescently stained cells were used as blank control (red line).

Flow cytometry: 1×10^6 Daudi cells were surface-stained with ABflo® 647 Rabbit IgG isotype control (A22070, 5 μ l/Test, left) or ABflo® 647 Rabbit anti-Human CD352/SLAMF6 mAb (A23799, 5 μ l/Test, right).