

ABflo® 647 Rabbit anti-Human CD79b/Igβ mAb

Catalog No.: A23802

Basic Information

Observed MW

Calculated MW

14kDa/26kDa

Category

Primary antibody

Applications

IF/ICC,FC

Cross-Reactivity

Human

CloneNo number

ARC61823

Conjugate

ABflo® 647. Ex:648nm. Em:664nm.

Background

The B lymphocyte antigen receptor is a multimeric complex that includes the antigen-specific component, surface immunoglobulin (Ig). Surface Ig non-covalently associates with two other proteins, Ig-alpha and Ig-beta, which are necessary for expression and function of the B-cell antigen receptor. This gene encodes the Ig-beta protein of the B-cell antigen component. Alternatively spliced transcript variants encoding different isoforms have been described.

Recommended Dilutions

IF/ICC 1:50 - 1:200

FC 5 µl per 10⁶ cells in
100 µl volume

Immunogen Information

Gene ID

974

Swiss Prot

P40259

Immunogen

Recombinant protein (or fragment). This information is considered to be commercially sensitive.

Synonyms

CD79B; AGM6; B29; IGB; CD79b molecule

Contact

☎ | 400-999-6126

✉ | cn.market@abclonal.com.cn

🌐 | www.abclonal.com.cn

Product Information

Source

Rabbit

Isotype

IgG

Purification

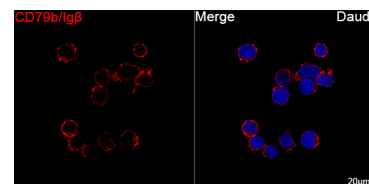
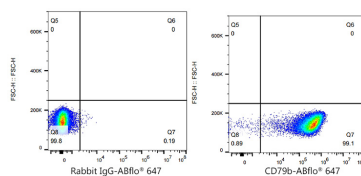
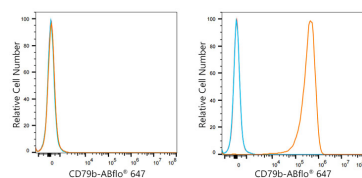
Affinity purification

Storage

Store at 2-8°C. Avoid freeze.

Buffer: PBS containing 0.2% BSA, preserved with proclin300 or sodium azide (as specified on the Certificate of Analysis), pH 7.3.

Validation Data



Flow cytometry: 1X10⁶ HAP1 cells(negative control,left) and Daudi cells (right) were surface-stained with ABflo® 647 Rabbit anti-Human CD79b/Igβ mAb(A23802,5 µl/Test,orange line) or ABflo® 647 Rabbit IgG isotype control (A22070,5 µl/Test,blue line).Non-fluorescently stained cells were used as blank control (red line).

Flow cytometry:1X10⁶ Daudi cells were surface-stained with ABflo® 647 Rabbit IgG isotype control (A22070,5 µl/Test,left) or ABflo® 647 Rabbit anti-Human CD79b/Igβ mAb(A23802,5 µl/Test,right).

Confocal imaging of Daudi cells using ABflo® 647 Rabbit anti-Human CD79b/Igβ mAb (A23802, dilution 1:50) (Red). DAPI was used for nuclear staining (Blue). Objective: 100x.