

# ABflo® 594 Rabbit anti-Mouse CD25 mAb

Catalog No.: A23809

## Basic Information

### Observed MW

Refer to figures

### Calculated MW

30KDa

### Category

Primary antibody

### Applications

FC

### Cross-Reactivity

Mouse

### CloneNo number

ARC54525-ABf594

### Conjugate

ABflo® 594. Ex:588nm. Em:604nm.

## Recommended Dilutions

FC 5 µl per 10<sup>6</sup> cells in  
100 µl volume

## Background

Enables interleukin-2 binding activity and interleukin-2 receptor activity. Acts upstream of or within several processes, including Notch signaling pathway; activation-induced cell death of T cells; and regulation of T cell proliferation. Located in external side of plasma membrane. Is expressed in bone marrow. Used to study Sjogren's syndrome and inflammatory bowel disease. Human ortholog(s) of this gene implicated in immunodeficiency 41; lymphopenia; multiple sclerosis; type 1 diabetes mellitus; and type 1 diabetes mellitus 10. Orthologous to human IL2RA (interleukin 2 receptor subunit alpha).

## Immunogen Information

### Gene ID

16184

### Swiss Prot

P01590

### Immunogen

Recombinant fusion protein containing a sequence corresponding to amino acids 22-236 of mouse CD25 (NP\_032393.3).

### Synonyms

CD25; IL2r; Ly-43

## Contact

 | 400-999-6126

 | [cn.market@abclonal.com.cn](mailto:cn.market@abclonal.com.cn)

 | [www.abclonal.com.cn](http://www.abclonal.com.cn)

## Product Information

### Source

Rabbit

### Isotype

IgG

### Purification

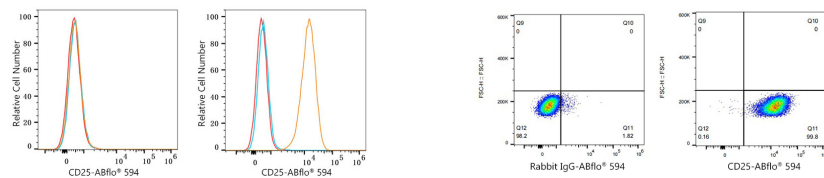
Affinity purification

### Storage

Store at 2-8°C. Avoid freeze.

Buffer: PBS with 0.03% proclin300,0.2% BSA,pH7.3.

## Validation Data



Flow cytometry:  $1 \times 10^6$  C2C12 cells (negative control, left) and CTLL-2 cells (right) were surface-stained with ABflo® 594 Rabbit anti-Mouse CD25 mAb (A23809, 5  $\mu$ l/Test, orange line) or ABflo® 594 Rabbit IgG isotype control (5  $\mu$ l/Test, blue line). Non-fluorescently stained cells were used as blank control (red line).

Flow cytometry:  $1 \times 10^6$  CTLL-2 cells were surface-stained with ABflo® 594 Rabbit IgG isotype control (5  $\mu$ l/Test, left) or ABflo® 594 Rabbit anti-Mouse CD25 mAb (A23809, 5  $\mu$ l/Test, right).