

CD352/SLAMF6 Rabbit mAb

Catalog No.: A23833 **Recombinant**

Basic Information

Observed MW

60kDa

Calculated MW

24kDa/37kDa

Category

Primary antibody

Applications

ELISA, WB, IHC-P, FC

Cross-Reactivity

Human, Mouse

CloneNo number

ARC60903

Background

The protein encoded by this gene is a type I transmembrane protein, belonging to the CD2 subfamily of the immunoglobulin superfamily. This encoded protein is expressed on Natural killer (NK), T, and B lymphocytes. It undergoes tyrosine phosphorylation and associates with the Src homology 2 domain-containing protein (SH2D1A) as well as with SH2 domain-containing phosphatases (SHPs). It functions as a coreceptor in the process of NK cell activation. It can also mediate inhibitory signals in NK cells from X-linked lymphoproliferative patients. Alternative splicing results in multiple transcript variants encoding distinct isoforms.

Recommended Dilutions

WB	1:500 - 1:1000
IHC-P	1:50 - 1:200
FC	1:500 - 1:1000

Immunogen Information

Gene ID

114836

Swiss Prot

Q96DU3

Immunogen

Recombinant fusion protein containing a sequence corresponding to amino acids 24-215 of human CD352/SLAMF6 (NP_001171643.1)

Synonyms

SLAMF6; CD352; KALI; KALIB; Ly108; NTB-A; NTBA; SF2000; SLAM family member 6; CD352/SLAMF6

Contact

	400-999-6126
	cn.market@abclonal.com.cn
	www.abclonal.com.cn

Product Information

Source

Rabbit

Isotype

IgG

Purification

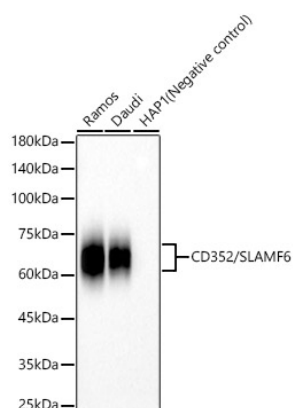
Affinity purification

Storage

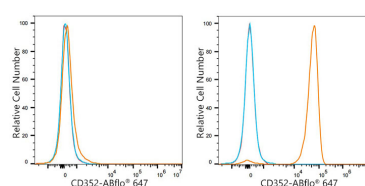
Store at -20°C. Avoid freeze / thaw cycles.

Buffer: PBS with 0.05% proclin300, 0.05% BSA, 50% glycerol, pH7.3.

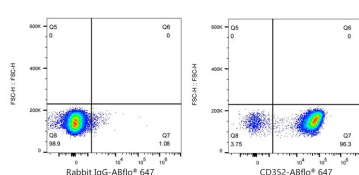
Validation Data



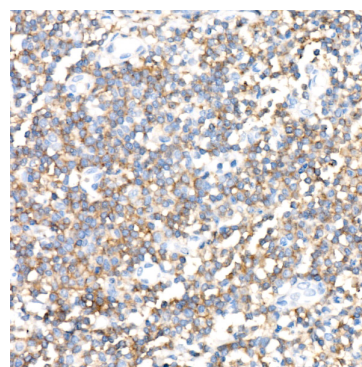
Western blot analysis of various lysates, using CD352/SLAMF6 Rabbit mAb (A23833) at 1:1000 dilution.
 Secondary antibody: HRP Goat Anti-Rabbit IgG (H+L) (AS014) at 1:10000 dilution.
 Lysates/proteins: 25µg per lane.
 Blocking buffer: 3% nonfat dry milk in TBST.
 Detection: ECL Basic Kit (RM00020).
 Exposure time: 30s.



Flow cytometry: 1×10^6 HAP1 cells (negative control, left) and Daudi cells (right) were surface-stained with CD352/SLAMF6 Rabbit mAb (A23833, 2µg/mL, orange line) or ABflo® 647 Rabbit IgG isotype control (A22070, 2µg/mL, blue line), followed by Alexa Fluor® 647 conjugated goat anti-rabbit pAb (1:200 dilution) staining. Non-fluorescently stained cells were used as blank control (red line).



Flow cytometry: 1×10^6 Daudi cells were surface-stained with ABflo® 647 Rabbit IgG isotype control (A22070, 2 µg/mL, left) or CD352/SLAMF6 Rabbit mAb (A23833, 2 µg/mL, right).



Immunohistochemistry analysis of paraffin-embedded human tonsil using CD352/SLAMF6 Rabbit mAb (A23833) at dilution of 1:200 (40x lens). Perform high pressure antigen retrieval with 10 mM citrate buffer pH 6.0 before commencing with IHC staining protocol.