

4F2hc/CD98/SLC3A2 Rabbit mAb

Catalog No.: A23839 **Recombinant** **1 Publications**

Basic Information

Observed MW

70-120kDa

Calculated MW

58kDa

Category

Primary antibody

Applications

WB, ELISA

Cross-Reactivity

Mouse, Rat

CloneNo number

ARC61478

Background

Predicted to enable amino acid transmembrane transporter activity and double-stranded RNA binding activity. Predicted to be involved in carboxylic acid transport and viral entry into host cell. Predicted to act upstream of or within response to exogenous dsRNA. Located in apical pole of neuron. Is active in synapse. Is expressed in several structures, including alimentary system; brain; genitourinary system; hemolymphoid system gland; and spinal cord. Orthologous to human SLC3A2 (solute carrier family 3 member 2).

Recommended Dilutions

WB 1:1000 - 1:2000

ELISA Recommended starting concentration is 1 µg/mL. Please optimize the concentration based on your specific assay requirements.

Immunogen Information

Gene ID

17254

Swiss Prot

P10852

Immunogen

Recombinant protein (or fragment). This information is considered to be commercially sensitive.

Synonyms

4F2; Cd98; Ly10; Mdu1; 4F2HC; Ly-10; NACAE; Ly-m10; Mgp-2hc; 4F2hc/CD98/SLC3A2

Contact

☎ | 400-999-6126

✉ | cn.market@abclonal.com.cn

🌐 | www.abclonal.com.cn

Product Information

Source

Rabbit

Isotype

IgG

Purification

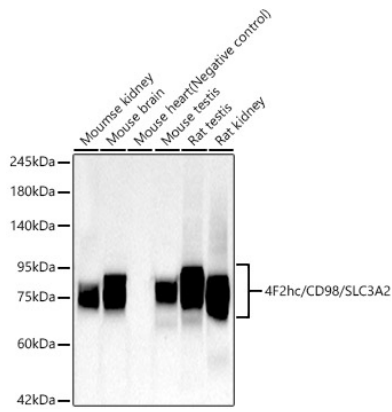
Affinity purification

Storage

Store at -20°C. Avoid freeze / thaw cycles.

Buffer: PBS containing 50% glycerol and 0.05% BSA, preserved with proclin300 or sodium azide (as specified on the Certificate of Analysis), pH 7.3.

Validation Data



Western blot analysis of various lysates, using 4F2hc/CD98/SLC3A2 Rabbit mAb (A23839) at 1:1000 dilution.

Secondary antibody: HRP-conjugated Goat anti-Rabbit IgG (H+L) (AS014) at 1:10000 dilution.

Lysates/proteins: 25µg per lane.

Blocking buffer: 3% nonfat dry milk in TBST.

Detection: ECL Basic Kit (RM00020).

Exposure time: 90s.