

# Claudin-4 Rabbit mAb

Catalog No.: A23841 **Recombinant** **1 Publications**

## Basic Information

### Observed MW

18kDa/

### Calculated MW

22kDa

### Category

Primary antibody

### Applications

WB,IHC-P,IP,ELISA

### Cross-Reactivity

Human

### CloneNo number

ARC61052

## Background

The protein encoded by this intronless gene belongs to the claudin family. Claudins are integral membrane proteins that are components of the epithelial cell tight junctions, which regulate movement of solutes and ions through the paracellular space. This protein is a high-affinity receptor for Clostridium perfringens enterotoxin (CPE) and may play a role in internal organ development and function during pre- and postnatal life. This gene is deleted in Williams-Beuren syndrome, a neurodevelopmental disorder affecting multiple systems.

## Recommended Dilutions

**WB** 1:7000 - 1:28000

**IHC-P** 1:1000 - 1:3000

**IP** 0.5µg-4µg antibody for 400µg-600µg extracts of whole cells

**ELISA** Recommended starting concentration is 1 µg/mL. Please optimize the concentration based on your specific assay requirements.

## Immunogen Information

### Gene ID

1364

### Swiss Prot

O14493

### Immunogen

A synthetic peptide corresponding to a sequence within amino acids 111-209 of human Claudin-4 (NP\_001296.1).

### Synonyms

CLDN4; CPE-R; CPER; CPETR; CPETR1; WBSCR8; hCPE-R; claudin-4; Claudin-4

## Contact

 | 400-999-6126

 | [cn.market@abclonal.com.cn](mailto:cn.market@abclonal.com.cn)

 | [www.abclonal.com.cn](http://www.abclonal.com.cn)

## Product Information

### Source

Rabbit

### Isotype

IgG

### Purification

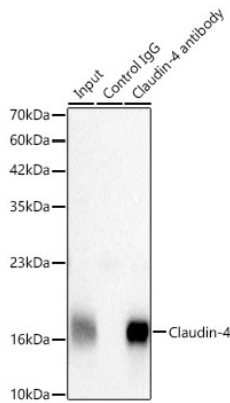
Affinity purification

### Storage

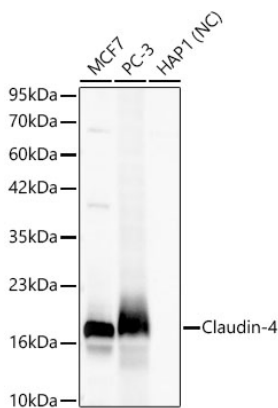
Store at -20°C. Avoid freeze / thaw cycles.

Buffer: PBS with 0.05% proclin300,0.05% BSA,50% glycerol,pH7.3.

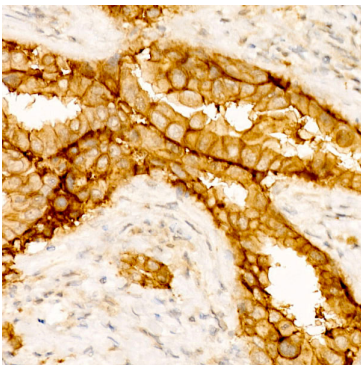
## Validation Data



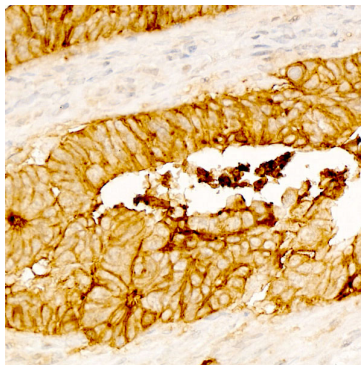
Immunoprecipitation of Claudin-4 from 500 µg extracts of MCF7 cells was performed using 2 µg of Claudin-4 Rabbit mAb (A23841). Rabbit IgG isotype control (AC042) was used to precipitate the Control IgG sample. IP samples were eluted with 1X non-reducing Laemmli Buffer. The Input lane represents 10% of the total input. Western blot analysis of immunoprecipitates was conducted using Claudin-4 Rabbit mAb (A23841) at a dilution of 1:5000.



Western blot analysis of various lysates using Claudin-4 Rabbit mAb (A23841) at 1:7000 dilution. Secondary antibody: HRP-conjugated Goat anti-Rabbit IgG (H+L) (AS014) at 1:10000 dilution. Lysates/proteins: 25µg per lane. Blocking buffer: 3% nonfat dry milk in TBST. Detection: ECL Basic Kit (RM00020). Negative control (NC): HAP1. Exposure time: 20s.



Immunohistochemistry analysis of paraffin-embedded Human breast tissue using Claudin-4 Rabbit mAb (A23841) at dilution of 1:3000 (40x lens). High pressure antigen retrieval performed with 0.01M Tris/EDTA Buffer (pH 9.0) prior to IHC staining.



Immunohistochemistry analysis of paraffin-embedded Human colon carcinoma tissue using Claudin-4 Rabbit mAb (A23841) at dilution of 1:3000 (40x lens). High pressure antigen retrieval performed with 0.01M Tris/EDTA Buffer (pH 9.0) prior to IHC staining.