

cGAS Rabbit pAb

Catalog No.: A23846 **8 Publications**

Basic Information

Observed MW

62kDa

Calculated MW

59kDa

Category

Primary antibody

Applications

WB,IF/ICC,ELISA

Cross-Reactivity

Human, Mouse, Rat

Background

Enables several functions, including 2',3'-cyclic GMP-AMP synthase activity; chromatin binding activity; and phosphatidylinositol-4,5-bisphosphate binding activity. Involved in several processes, including cellular response to exogenous dsRNA; positive regulation of intracellular signal transduction; and regulation of defense response. Located in several cellular components, including cytosol; nucleus; and site of double-strand break.

Recommended Dilutions

WB 1:500 - 1:1000

IF/ICC 1:50 - 1:200

ELISA Recommended starting concentration is 1 µg/mL. Please optimize the concentration based on your specific assay requirements.

Immunogen Information

Gene ID

115004

Swiss Prot

Q8N884

Immunogen

Synthetic peptide. This information is considered to be commercially sensitive.

Synonyms

MB21D1; h-cGAS; C6orf150; cGAS

Contact

☎ | 400-999-6126

✉ | cn.market@abclonal.com.cn

🌐 | www.abclonal.com.cn

Product Information

Source

Rabbit

Isotype

IgG

Purification

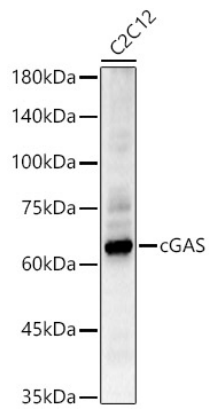
Affinity purification

Storage

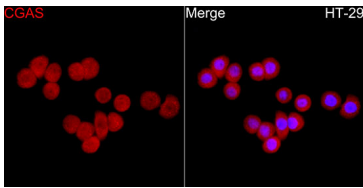
Store at -20°C. Avoid freeze / thaw cycles.

Buffer: PBS containing 50% glycerol, preserved with proclin300 or sodium azide (as specified on the Certificate of Analysis), pH 7.3.

Validation Data



Western blot analysis of lysates from C2C12 cells, using cGAS Rabbit pAb (A23846) at 1:1000 dilution.
Secondary antibody: HRP-conjugated Goat anti-Rabbit IgG (H+L) (AS014) at 1:10000 dilution.
Lysates/proteins: 25µg per lane.
Blocking buffer: 3% nonfat dry milk in TBST.
Detection: ECL Basic Kit (RM00020).
Exposure time: 60s.



Immunofluorescence analysis of HT-29 cells using cGAS Rabbit pAb (A23846) at dilution of 1:200 (40x lens). Secondary antibody: Cy3-conjugated Goat anti-Rabbit IgG (H+L) (AS007) at 1:500 dilution. Blue: DAPI for nuclear staining.