

# ABflo® 647 Rabbit anti-Human/Mouse BCL6 mAb

Catalog No.: A23848

## Basic Information

### Observed MW

### Calculated MW

72kDa/78kDa

### Category

Primary antibody

### Applications

FC (intra)

### Cross-Reactivity

Human, Mouse

### CloneNo number

ARC57886-ABflo647

### Conjugate

ABflo® 647. Ex:648nm. Em:664nm.

## Recommended Dilutions

**FC (intra)** 5 µl per 10<sup>6</sup> cells in  
100 µl volume

## Background

The protein encoded by this gene is a zinc finger transcription factor and contains an N-terminal POZ domain. This protein acts as a sequence-specific repressor of transcription, and has been shown to modulate the transcription of STAT-dependent IL-4 responses of B cells. This protein can interact with a variety of POZ-containing proteins that function as transcription corepressors. This gene is found to be frequently translocated and hypermutated in diffuse large-cell lymphoma (DLCL), and may be involved in the pathogenesis of DLCL. Alternatively spliced transcript variants encoding different protein isoforms have been found for this gene.

## Immunogen Information

### Gene ID

604

### Swiss Prot

P41182

### Immunogen

Recombinant fusion protein containing a sequence corresponding to amino acids 235-350 of human BCL6(NP\_001124317.1).

### Synonyms

BCL6; BCL5; BCL6A; LAZ3; ZBTB27; ZNF51; B-cell CLL/lymphoma 6

## Contact

☎ | 400-999-6126

✉ | [cn.market@abclonal.com.cn](mailto:cn.market@abclonal.com.cn)

🌐 | [www.abclonal.com.cn](http://www.abclonal.com.cn)

## Product Information

### Source

Rabbit

### Isotype

IgG

### Purification

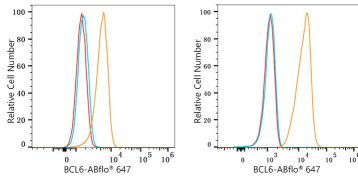
Affinity purification

### Storage

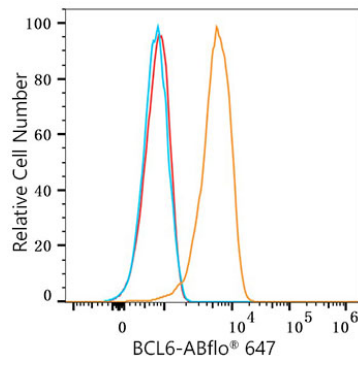
Store at 2-8°C. Avoid freeze.

Buffer: PBS with 0.03% proclin300,0.2% BSA,pH7.3.

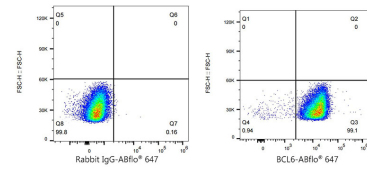
## Validation Data



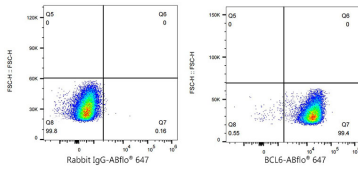
Flow cytometry:  $1 \times 10^6$  HAP1 cells (Low Expression, left) and Daudi cells (right) were intracellularly-stained with ABflo® 647 Rabbit anti-Human/Mouse BCL6 mAb (A23848, 5  $\mu$ l/Test, orange line) or ABflo® 647 Rabbit IgG isotype control (A22069, 5  $\mu$ l/Test, blue line). Non-fluorescently stained cells were used as blank control (red line).



Flow cytometry:  $1 \times 10^6$  A20 cells were intracellularly-stained with ABflo® 647 Rabbit anti-Human/Mouse BCL6 mAb (A23848, 5  $\mu$ l/Test, orange line) or ABflo® 647 Rabbit IgG isotype control (A22069, 5  $\mu$ l/Test, blue line). Non-fluorescently stained A20 cells were used as blank control (red line).



Flow cytometry:  $1 \times 10^6$  Daudi cells were intracellularly-stained with ABflo® 647 Rabbit IgG isotype control (A22069, 5  $\mu$ l/Test, left) or ABflo® 647 Rabbit anti-Human/Mouse BCL6 mAb.



Flow cytometry:  $1 \times 10^6$  A20 cells were intracellularly-stained with ABflo® 647 Rabbit IgG isotype control (A22069, 5  $\mu$ l/Test, left) or ABflo® 647 Rabbit anti-Human/Mouse BCL6 mAb.