

ABflo® 594 Rabbit anti-Human CD215/IL-15R alpha mAb

Catalog No.: A23849

Basic Information

Observed MW

Calculated MW
15-28kDa

Category
Primary antibody

Applications
FC

Cross-Reactivity
Human

CloneNo number
ARC55696

Conjugate
ABflo® 594. Ex:588nm. Em:604nm.

Background

This gene encodes a cytokine receptor that specifically binds interleukin 15 (IL15) with high affinity. The receptors of IL15 and IL2 share two subunits, IL2R beta and IL2R gamma. This forms the basis of many overlapping biological activities of IL15 and IL2. The protein encoded by this gene is structurally related to IL2R alpha, an additional IL2-specific alpha subunit necessary for high affinity IL2 binding. Unlike IL2RA, IL15RA is capable of binding IL15 with high affinity independent of other subunits, which suggests distinct roles between IL15 and IL2. This receptor is reported to enhance cell proliferation and expression of apoptosis inhibitor BCL2L1/BCL2-XL and BCL2. Multiple alternatively spliced transcript variants of this gene have been reported.

Recommended Dilutions

FC 5 µl per 10⁶ cells in
100 µl volume

Immunogen Information

Gene ID 3601	Swiss Prot Q13261
------------------------	-----------------------------

Immunogen

Recombinant protein (or fragment). This information is considered to be commercially sensitive.

Synonyms

IL15RA; CD215; interleukin-15 receptor subunit alpha

Contact

☎		400-999-6126
✉		cn.market@abclonal.com.cn
🌐		www.abclonal.com.cn

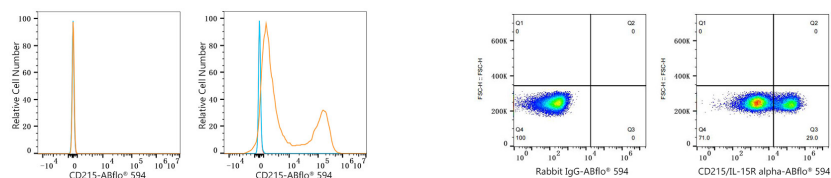
Product Information

Source Rabbit	Isotype IgG	Purification Affinity purification
-------------------------	-----------------------	--

Storage

Store at 2-8°C. Avoid freeze.
Buffer: PBS containing 0.2% BSA, preserved with proclin300 or sodium azide (as specified on the Certificate of Analysis), pH 7.3.

Validation Data



Flow cytometry: 1X10⁶ 293F cells(negative control,left) and 293F(Transfection,right) cells were surface-stained with ABflo® 594 Rabbit anti-Human CD215/IL-15R alpha mAb(A23849,5 µl/Test,orange line) or ABflo® 594 Rabbit IgG isotype control (5 µl/Test,blue line).Non-fluorescently stained cells were used as blank control (red line).

Flow cytometry:1X10⁶ 293T(Transfection) cells were surface-stained with ABflo® 594 Rabbit IgG isotype control (5 µl/Test,left) or ABflo® 594 Rabbit anti-Human CD215/IL-15R alpha mAb(A23849,5 µl/Test,right).