

ABflo® 647 Rabbit anti-Mouse CD23 mAb

Catalog No.: A23851

Basic Information

Observed MW

Refer to figures

Calculated MW

37KDa

Category

Primary antibody

Applications

FC

Cross-Reactivity

Mouse

CloneNo number

ARC60396-ABf647

Conjugate

ABflo® 647, Ex:648nm, Em:664nm.

Recommended Dilutions

FC 5 µl per 10⁶ cells in
100 µl volume

Background

Predicted to enable carbohydrate binding activity. Acts upstream of or within positive regulation of humoral immune response mediated by circulating immunoglobulin. Located in external side of plasma membrane. Orthologous to human FCER2 (Fc fragment of IgE receptor II).

Immunogen Information

Gene ID

14128

Swiss Prot

P20693

Immunogen

Recombinant fusion protein containing a sequence corresponding to amino acids 50-331 of mouse CD23 (NP_038545.1).

Synonyms

CD23; Fce2; Fcer2; Ly-42

Contact

 | 400-999-6126

 | cn.market@abclonal.com.cn

 | www.abclonal.com.cn

Product Information

Source

Rabbit

Isotype

IgG

Purification

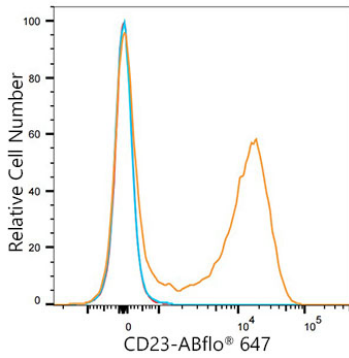
Affinity purification

Storage

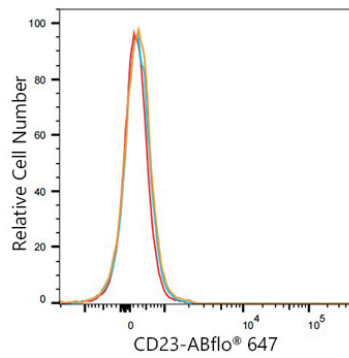
Store at 2-8°C. Avoid freeze.

Buffer: PBS with 0.03% proclin300,0.2% BSA,pH7.3.

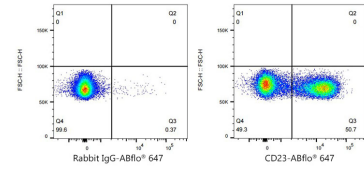
Validation Data



Flow cytometry: 1×10^6 C57BL/6 mouse Splenocytes were surface-stained with ABflo® 647 Rabbit anti-Mouse CD23 mAb (A23851,5 μ l/Test, orange line) or ABflo® 647 Rabbit IgG isotype control (A22070,5 μ l/Test, blue line). Non-fluorescently stained C57BL/6 mouse Splenocytes cells were used as blank control (red line).



Flow cytometry: 1×10^6 HEL cells (negative control) were surface-stained with ABflo® 647 Rabbit anti-Mouse CD23 mAb (A23851,5 μ l/Test, orange line) or ABflo® 647 Rabbit IgG isotype control (A22070,5 μ l/Test, blue line). Non-fluorescently stained HEL cells were used as blank control (red line).



Flow cytometry: 1×10^6 C57BL/6 mouse Splenocytes were surface-stained with ABflo® 647 Rabbit IgG isotype control (A22070,5 μ l/Test, left) or ABflo® 647 Rabbit anti-Mouse CD23 mAb (A23851,5 μ l/Test, right).