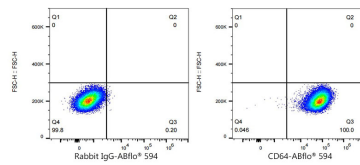
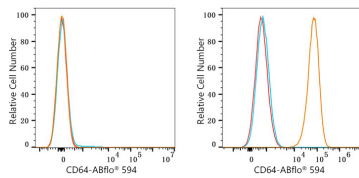




## Validation Data



Flow cytometry:  $1 \times 10^6$  BALB/C mouse splenocyte (negative control, left) and RAW264.7 cells (right) were surface-stained with ABflo® 594 Rabbit anti-Mouse FcγRI/CD64 mAb (A23857, 5 μl/Test, orange line) or ABflo® 594 Rabbit IgG isotype control (5 μl/Test, blue line). Non-fluorescently stained cells were used as blank control (red line).

Flow cytometry:  $1 \times 10^6$  RAW264.7 cells were surface-stained with ABflo® 594 Rabbit IgG isotype control (5 μl/Test, left) or ABflo® 594 Rabbit anti-Mouse FcγRI/CD64 mAb (A23857, 5 μl/Test, right).