

SLC25A29 Rabbit pAb

Catalog No.: A23864

Basic Information

Observed MW

Refer to figures

Calculated MW

32kDa

Category

Primary antibody

Applications

ELISA, IHC-P

Cross-Reactivity

Human

Background

This gene encodes a nuclear-encoded mitochondrial protein that is a member of the large family of solute carrier family 25 (SLC25) mitochondrial transporters. The members of this superfamily are involved in numerous metabolic pathways and cell functions. This gene product was previously reported to be a mitochondrial carnitine-acylcarnitine-like (CACL) translocase (PMID:128829710) or an ornithine transporter (designated ORNT3, PMID:19287344), however, a recent study characterized the main role of this protein as a mitochondrial transporter of basic amino acids, with a preference for arginine and lysine (PMID:24652292). Alternatively spliced transcript variants have been found for this gene.

Recommended Dilutions

IHC-P 1:50 - 1:200

Immunogen Information

Gene ID

123096

Swiss Prot

Q8N8R3

Immunogen

A synthetic peptide corresponding to a sequence within amino acids 200-303 of human SLC25A29(NP_001034444.1).

Synonyms

CACL; ORNT3; C14orf69; SLC25A29

Contact

☎ | 400-999-6126

✉ | cn.market@abclonal.com.cn

🌐 | www.abclonal.com.cn

Product Information

Source

Rabbit

Isotype

IgG

Purification

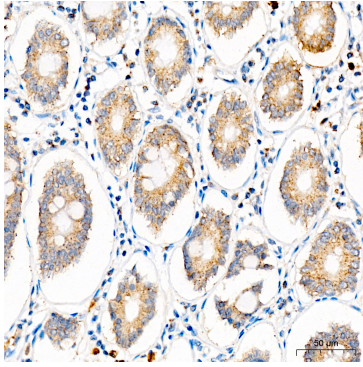
Affinity purification

Storage

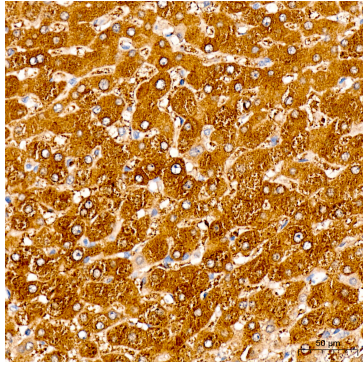
Store at -20°C. Avoid freeze / thaw cycles.

Buffer: PBS with 0.05% proclin300, 50% glycerol, pH7.3.

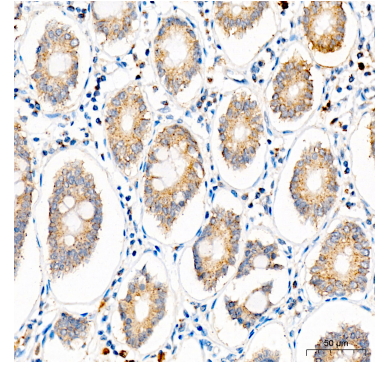
Validation Data



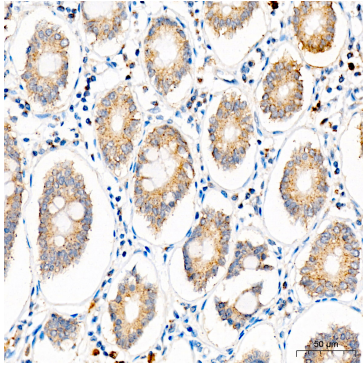
Immunohistochemistry analysis of SLC25A29 in paraffin-embedded human colon tissue using SLC25A29 Rabbit pAb (A23864) at a dilution of 1:100 (40x lens). High pressure antigen retrieval was performed with 0.01 M citrate buffer (pH 6.0) prior to IHC staining.



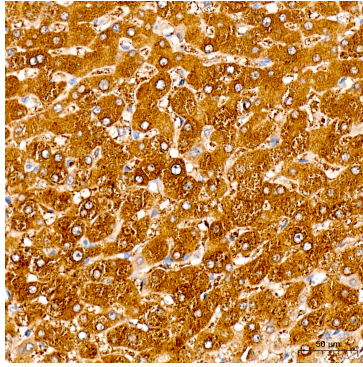
Immunohistochemistry analysis of SLC25A29 in paraffin-embedded human liver tissue using SLC25A29 Rabbit pAb (A23864) at a dilution of 1:100 (40x lens). High pressure antigen retrieval was performed with 0.01 M citrate buffer (pH 6.0) prior to IHC staining.



Immunohistochemistry analysis of SLC25A29 in paraffin-embedded human colon tissue using SLC25A29 Rabbit pAb (A23864) at a dilution of 1:100 (40x lens). High pressure antigen retrieval was performed with 0.01 M citrate buffer (pH 6.0) prior to IHC staining.



Immunohistochemistry analysis of SLC25A29 in paraffin-embedded human colon tissue using SLC25A29 Rabbit pAb (A23864) at a dilution of 1:100 (40x lens). High pressure antigen retrieval was performed with 0.01 M citrate buffer (pH 6.0) prior to IHC staining.



Immunohistochemistry analysis of SLC25A29 in paraffin-embedded human liver tissue using SLC25A29 Rabbit pAb (A23864) at a dilution of 1:100 (40x lens). High pressure antigen retrieval was performed with 0.01 M citrate buffer (pH 6.0) prior to IHC staining.