

SLC25A21 Rabbit pAb

Catalog No.: A23865

Basic Information

Observed MW

33kDa

Calculated MW

33kDa

Category

Primary antibody

Applications

ELISA, WB, IHC-P

Cross-Reactivity

Human, Rat

Background

SLC25A21 is a homolog of the *S. cerevisiae* ODC proteins, mitochondrial carriers that transport C5-C7 oxodicarboxylates across inner mitochondrial membranes. One of the species transported by ODC is 2-oxoadipate, a common intermediate in the catabolism of lysine, tryptophan, and hydroxylysine in mammals. Within mitochondria, 2-oxoadipate is converted into acetyl-CoA.

Recommended Dilutions

WB 1:100 - 1:500

IHC-P 1:50 - 1:200

Immunogen Information

Gene ID

89874

Swiss Prot

Q9BQT8

Immunogen

A synthetic peptide corresponding to a sequence within amino acids 148-247 of human SLC25A21(NP_085134.1).

Synonyms

ODC; ODC1; MTDPS18; SLC25A21

Contact

☎ | 400-999-6126

✉ | cn.market@abclonal.com.cn

🌐 | www.abclonal.com.cn

Product Information

Source

Rabbit

Isotype

IgG

Purification

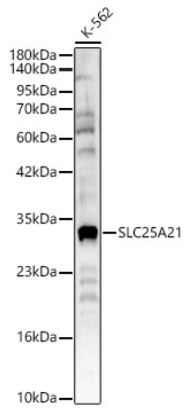
Affinity purification

Storage

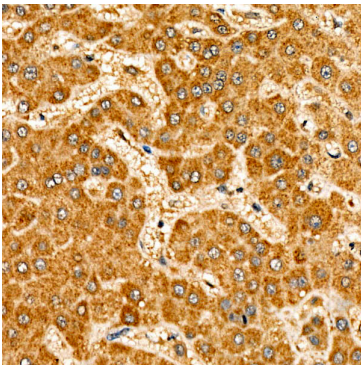
Store at -20°C. Avoid freeze / thaw cycles.

Buffer: PBS with 0.05% proclin300, 50% glycerol, pH7.3.

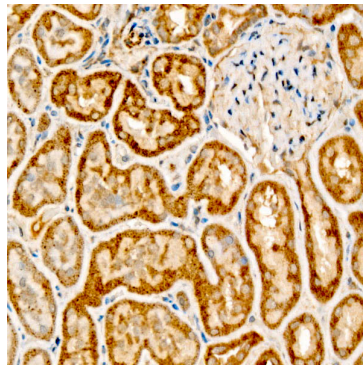
Validation Data



Western blot analysis of lysates from K-562 cells, using SLC25A21 Rabbit pAb (A23865) at 1:400 dilution.
Secondary antibody: HRP Goat Anti-Rabbit IgG (H+L) (AS014) at 1:10000 dilution.
Lysates/proteins: 25ug per lane.
Blocking buffer: 3% nonfat dry milk in TBST.
Detection: ECL Basic Kit (RM00020).
Exposure time: 180s.



Immunohistochemistry analysis of SLC25A21 in paraffin-embedded human liver tissue using SLC25A21 Rabbit pAb (A23865) at a dilution of 1:50 (40x lens). High pressure antigen retrieval was performed with 0.01 M citrate buffer (pH 6.0) prior to IHC staining.



Immunohistochemistry analysis of SLC25A21 in paraffin-embedded rat kidney tissue using SLC25A21 Rabbit pAb (A23865) at a dilution of 1:50 (40x lens). High pressure antigen retrieval was performed with 0.01 M citrate buffer (pH 6.0) prior to IHC staining.