

LEFTY1/2 Rabbit mAb

Catalog No.: A2387 **Recombinant**

Basic Information

Observed MW

41kDa

Calculated MW

34.44kDa

Category

Primary antibody

Applications

ELISA,WB,IHC-P

Cross-Reactivity

Human, Mouse, Rat

CloneNo number

ARC2149

Background

This gene encodes a secreted ligand of the TGF-beta (transforming growth factor-beta) superfamily of proteins. Ligands of this family bind various TGF-beta receptors leading to recruitment and activation of SMAD family transcription factors that regulate gene expression. The encoded preproprotein is proteolytically processed to generate the mature protein, which plays a role in left-right asymmetry determination of organ systems during development. This gene is closely linked to both a related family member and a related pseudogene. [provided by RefSeq, Aug 2016]

Recommended Dilutions

WB	1:500 - 1:2000
IHC-P	1:50 - 1:200

Immunogen Information

Gene ID

10637/7044

Swiss Prot

O75610/O00292

Immunogen

A synthetic peptide corresponding to a sequence within amino acids 267-366 of human LEFTY1/2 (O75610).

Synonyms

LEFTB; LEFTYB; LEFTY1/2

Contact

☎ | 400-999-6126

✉ | cn.market@abclonal.com.cn

🌐 | www.abclonal.com.cn

Product Information

Source

Rabbit

Isotype

IgG

Purification

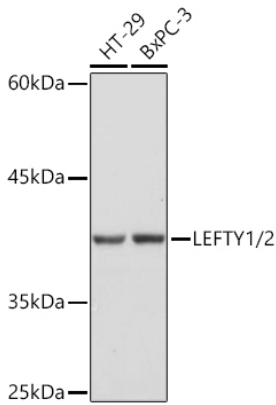
Affinity purification

Storage

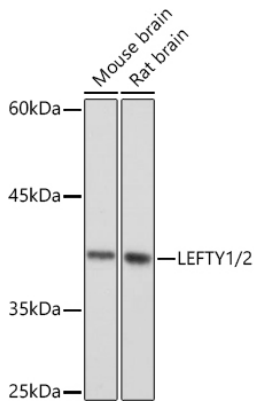
Store at -20°C. Avoid freeze / thaw cycles.

Buffer: PBS with 0.02% sodium azide,0.05% BSA,50% glycerol,pH7.3.

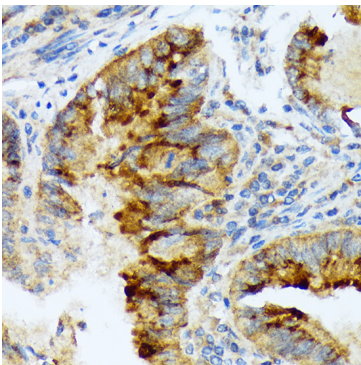
Validation Data



Western blot analysis of various lysates using LEFTY1/2 Rabbit mAb (A2387) at 1:1000 dilution.
Secondary antibody: HRP Goat Anti-Rabbit IgG (H+L) (AS014) at 1:10000 dilution.
Lysates/proteins: 25µg per lane.
Blocking buffer: 3% nonfat dry milk in TBST.
Detection: ECL Basic Kit (RM00020).
Exposure time: 1s.



Western blot analysis of various lysates using LEFTY1/2 Rabbit mAb (A2387) at 1:1000 dilution.
Secondary antibody: HRP Goat Anti-Rabbit IgG (H+L) (AS014) at 1:10000 dilution.
Lysates/proteins: 25µg per lane.
Blocking buffer: 3% nonfat dry milk in TBST.
Detection: ECL Basic Kit (RM00020).
Exposure time: 10s.



Immunohistochemistry analysis of paraffin-embedded human colon carcinoma using LEFTY1/2 Rabbit mAb (A2387) at dilution of 1:100 (40x lens). Perform microwave antigen retrieval with 10 mM Tris/EDTA buffer pH 9.0 before commencing with IHC staining protocol.