

p16 INK4A Rabbit pAb

Catalog No.: A23882 **1 Publications**

Basic Information

Observed MW

14kDa

Calculated MW

17KDa

Category

Primary antibody

Applications

ELISA,WB

Cross-Reactivity

Human, Mouse, Rat

Background

Enables MDM2/MDM4 family protein binding activity; enzyme inhibitor activity; and protein N-terminus binding activity. Involved in several processes, including negative regulation of lymphocyte proliferation; positive regulation of apoptotic process; and regulation of transcription, DNA-templated. Acts upstream of or within several processes, including negative regulation of cellular protein metabolic process; negative regulation of mammary gland epithelial cell proliferation; and positive regulation of apoptotic process involved in mammary gland involution. Located in cytoplasm and granular component. Part of protein-containing complex. Is expressed in several structures, including bone marrow; central nervous system; dorsal root ganglion; eye; and testis. Human ortholog(s) of this gene implicated in several diseases, including breast cancer (multiple); carcinoma (multiple); hematologic cancer (multiple); melanoma (multiple); and nervous system cancer (multiple). Orthologous to human CDKN2A (cyclin dependent kinase inhibitor 2A).

Recommended Dilutions

WB 1:500 - 1:1000

Immunogen Information

Gene ID

12578

Swiss Prot

P51480

Immunogen

Recombinant protein of mouse p16 INK4A.

Synonyms

Arf; p16; MTS1; Pctr1; p19ARF; p16INK4a; p19; ARF-INK4a; INK4a-ARF; Ink4a/Arf; p16(INK4a); p16 INK4A

Contact

 | 400-999-6126 | cn.market@abclonal.com.cn | www.abclonal.com.cn

Product Information

Source

Rabbit

Isotype

IgG

Purification

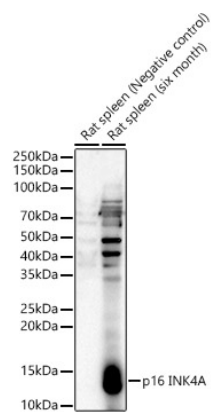
Affinity purification

Storage

Store at -20°C. Avoid freeze / thaw cycles.

Buffer: PBS with 0.05% proclin300,50% glycerol,pH7.3.

Validation Data



Western blot analysis of various lysates, using p16 INK4A Rabbit pAb (A23882) at 1:1000 dilution. Secondary antibody: HRP Goat Anti-Rabbit IgG (H+L) (AS014) at 1:10000 dilution. Lysates/proteins: 25ug per lane. Blocking buffer: 3% nonfat dry milk in TBST. Detection: ECL Basic Kit (RM00020). Exposure time: 45s.