

# COL10A1 Rabbit pAb

Catalog No.: A23884 **1 Publications**

## Basic Information

### Observed MW

66kDa

### Calculated MW

66kDa

### Category

Primary antibody

### Applications

ELISA, WB

### Cross-Reactivity

Human

## Background

This gene encodes the alpha chain of type X collagen, a short chain collagen expressed by hypertrophic chondrocytes during endochondral ossification. Unlike type VIII collagen, the other short chain collagen, type X collagen is a homotrimer. Mutations in this gene are associated with Schmid type metaphyseal chondrodysplasia (SMCD) and Japanese type spondylometaphyseal dysplasia (SMD).

## Recommended Dilutions

WB 1:100 - 1:500

## Immunogen Information

### Gene ID

1300

### Swiss Prot

Q03692

### Immunogen

Recombinant fusion protein containing a sequence corresponding to amino acids 1-100 of human COL10A1. (NP\_000484.2).

### Synonyms

COL10A1; collagen alpha-1(X) chain

## Contact

 | 400-999-6126

 | [cn.market@abclonal.com.cn](mailto:cn.market@abclonal.com.cn)

 | [www.abclonal.com.cn](http://www.abclonal.com.cn)

## Product Information

### Source

Rabbit

### Isotype

IgG

### Purification

Affinity purification

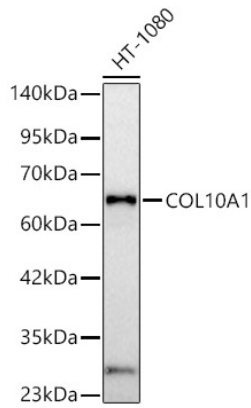
### Storage

Store at -20°C. Avoid freeze / thaw cycles.

Buffer: PBS with 0.01% thimerosal, 50% glycerol, pH7.3.

## Validation Data

---



Western blot analysis of lysates from HT-1080 cells, using COL10A1 Rabbit pAb (A23884) at 1:500 dilution.

Secondary antibody: HRP Goat Anti-Rabbit IgG (H+L) (AS014) at 1:10000 dilution.

Lysates/proteins: 25ug per lane.

Blocking buffer: 3% nonfat dry milk in TBST.

Detection: ECL Basic Kit (RM00020).

Exposure time: 45s.