

Ly-6C Rabbit pAb

Catalog No.: A23885

Basic Information

Observed MW

15kDa

Calculated MW

14kDa

Category

Primary antibody

Applications

ELISA, WB

Cross-Reactivity

Mouse

Background

Predicted to enable acetylcholine receptor binding activity and acetylcholine receptor inhibitor activity. Predicted to be involved in acetylcholine receptor signaling pathway. Located in external side of plasma membrane. Is expressed in embryo mesenchyme; gut; liver; metanephros; and nasal cavity. Orthologous to human LY6H (lymphocyte antigen 6 family member H).

Recommended Dilutions

WB 1:1000 - 1:5000

Immunogen Information

Gene ID

17067

Swiss Prot

P0CW02

Immunogen

Recombinant protein of mouse Ly-6C.

Synonyms

Ly6c; Ly-6C; Ly-6C1

Contact

 | 400-999-6126

 | cn.market@abclonal.com.cn

 | www.abclonal.com.cn

Product Information

Source

Rabbit

Isotype

IgG

Purification

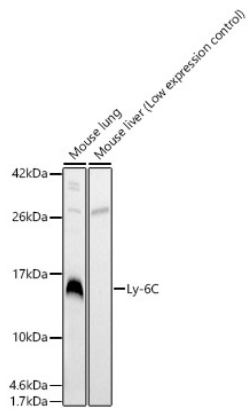
Affinity purification

Storage

Store at -20°C. Avoid freeze / thaw cycles.

Buffer: PBS with 0.01% thimerosal, 50% glycerol, pH7.3.

Validation Data



Western blot analysis of various lysates, using Ly-6C Rabbit pAb (A23885) at 1:3000 dilution.
Secondary antibody: HRP Goat Anti-Rabbit IgG (H+L) (AS014) at 1:10000 dilution.
Lysates/proteins: 25ug per lane.
Blocking buffer: 3% nonfat dry milk in TBST.
Detection: ECL Basic Kit (RM00020).
Exposure time: 5s.