

# [KO Validated] SMPD1 Rabbit mAb

Catalog No.: A23894 **KO Validated** **Recombinant**

## Basic Information

### Observed MW

57kDa/70kDa

### Calculated MW

70kDa

### Category

Primary antibody

### Applications

ELISA, WB, IHC-P

### Cross-Reactivity

Human, Mouse, Rat

### CloneNo number

ARC62108

## Background

The protein encoded by this gene is a lysosomal acid sphingomyelinase that converts sphingomyelin to ceramide. The encoded protein also has phospholipase C activity. Defects in this gene are a cause of Niemann-Pick disease type A (NPA) and Niemann-Pick disease type B (NPB). Multiple transcript variants encoding different isoforms have been identified.

## Recommended Dilutions

<b>WB</b>	1:1000 - 1:3000
<b>IHC-P</b>	1:50-1:200

## Immunogen Information

### Gene ID

6609

### Swiss Prot

P17405

### Immunogen

Recombinant fusion protein containing a sequence corresponding to amino acids 70-340 of human SMPD1(NP\_000534.3).

### Synonyms

ASM; NPD; ASMASE; D1

## Contact

 | 400-999-6126

 | [cn.market@abclonal.com.cn](mailto:cn.market@abclonal.com.cn)

 | [www.abclonal.com.cn](http://www.abclonal.com.cn)

## Product Information

### Source

Rabbit

### Isotype

IgG

### Purification

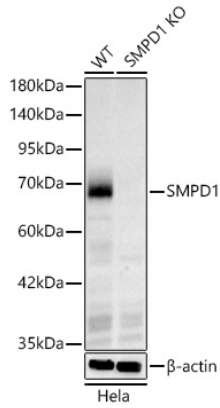
Affinity purification

### Storage

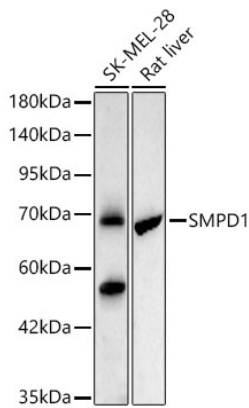
Store at -20°C. Avoid freeze / thaw cycles.

Buffer: PBS with 0.05% proclin300, 0.05% BSA, 50% glycerol, pH7.3.

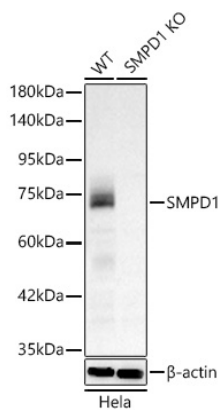
## Validation Data



Western blot analysis of extracts from wild type (WT) and SMPD4 knockout (KO) HeLa cells, using SMPD1 Rabbit mAb (A23894) at 1:1000 dilution. Secondary antibody: HRP Goat Anti-Rabbit IgG (H+L) (AS014) at 1:10000 dilution. Lysates/proteins: 25ug per lane. Blocking buffer: 3% nonfat dry milk in TBST. Detection: ECL Basic Kit (RM00020). Exposure time: 90s.



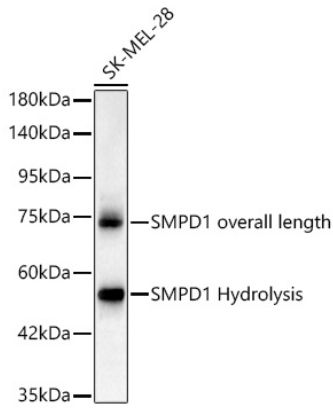
Western blot analysis of various lysates, using SMPD1 Rabbit mAb (A23894) at 1:1000 dilution. Secondary antibody: HRP Goat Anti-Rabbit IgG (H+L) (AS014) at 1:10000 dilution. Lysates/proteins: 25ug per lane. Blocking buffer: 3% nonfat dry milk in TBST. Detection: ECL Basic Kit (RM00020). Exposure time: 90s.



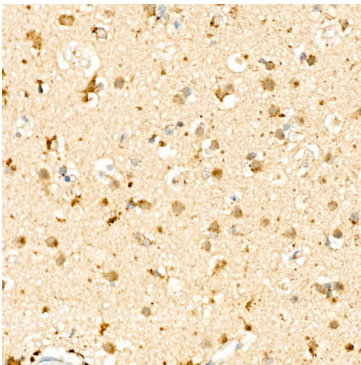
Western blot analysis of extracts from wild type (WT) and SMPD4 knockout (KO) HeLa cells, using SMPD4 Rabbit pAb antibody (A23894) at 1:1000 dilution. Secondary antibody: HRP Goat Anti-Rabbit IgG (H+L) (AS014) at 1:10000 dilution. Lysates/proteins: 25ug per lane. Blocking buffer: 3% nonfat dry milk in TBST. Detection: ECL Basic Kit (RM00020). Exposure time: 90s.

## Validation Data

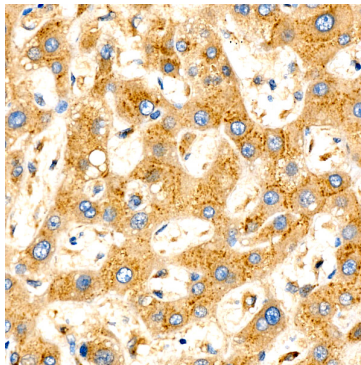
---



Western blot analysis of SK-MEL-28, using SMPD1 Rabbit mAb (A23894) at 1:1000 dilution.  
Secondary antibody: HRP Goat Anti-Rabbit IgG (H+L) (AS014) at 1:10000 dilution.  
Lysates/proteins: 25ug per lane.  
Blocking buffer: 3% nonfat dry milk in TBST.  
Detection: ECL Basic Kit (RM00020).  
Exposure time: 90s.



Immunohistochemistry analysis of paraffin-embedded human brain using [KO Validated] SMPD1 Rabbit mAb (A23894) at dilution of 1:100 (40x lens). Perform high pressure antigen retrieval with 10 mM citrate buffer pH 6.0 before commencing with IHC staining protocol.



Immunohistochemistry analysis of paraffin-embedded human liver using [KO Validated] SMPD1 Rabbit mAb (A23894) at dilution of 1:100 (40x lens). Perform high pressure antigen retrieval with 10 mM citrate buffer pH 6.0 before commencing with IHC staining protocol.