

# ABflo® 647 Rabbit anti-Mouse CD8a mAb

Catalog No.: A23904

## Basic Information

### Observed MW

Refer to figures

### Calculated MW

27KDa

### Category

Primary antibody

### Applications

FC

### Cross-Reactivity

Mouse

### CloneNo number

ARC60677

### Conjugate

ABflo® 647. Ex:648nm. Em:664nm.

## Recommended Dilutions

**FC** 5 µl per 10<sup>6</sup> cells in  
100 µl volume

## Background

Enables identical protein binding activity. Acts upstream of or within several processes, including cytotoxic T cell differentiation; defense response to virus; and positive regulation of calcium-mediated signaling. Located in external side of plasma membrane. Is expressed in several structures, including endocrine gland; exocrine gland; genitourinary system; gut; and hemolymphoid system gland. Orthologous to human CD8A (CD8a molecule).

## Immunogen Information

### Gene ID

12525

### Swiss Prot

P01731

### Immunogen

Recombinant protein (or fragment). This information is considered to be commercially sensitive.

### Synonyms

Ly-2; Ly-B; Ly-35; Lyt-2

## Contact

☎ | 400-999-6126

✉ | [cn.market@abclonal.com.cn](mailto:cn.market@abclonal.com.cn)

🌐 | [www.abclonal.com.cn](http://www.abclonal.com.cn)

## Product Information

### Source

Rabbit

### Isotype

IgG

### Purification

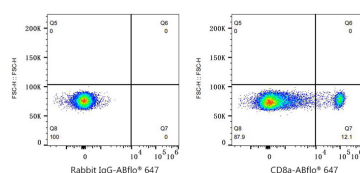
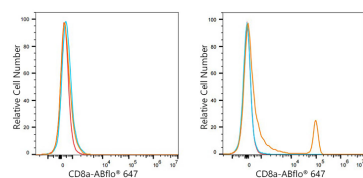
Affinity purification

### Storage

Store at 2-8°C. Avoid freeze.

Buffer: PBS containing 0.2% BSA, preserved with proclin300 or sodium azide (as specified on the Certificate of Analysis), pH 7.3.

## Validation Data



Flow cytometry:  $1 \times 10^6$  Raw264.7 cells (negative control, left) and C57BL/6 mouse Splenocytes (right) were surface-stained with ABflo® 647 Rabbit anti-Mouse CD8a mAb (A23904, 5  $\mu$ l/Test, orange line) or ABflo® 647 Rabbit IgG isotype control (A22070, 5  $\mu$ l/Test, blue line). Non-fluorescently stained cells were used as blank control (red line).

Flow cytometry:  $1 \times 10^6$  C57BL/6 mouse Splenocytes were surface-stained with ABflo® 647 Rabbit IgG isotype control (A22070, 5  $\mu$ l/Test, left) or ABflo® 647 Rabbit anti-Mouse CD8a mAb (A23904, 5  $\mu$ l/Test, right).