

JAM-A/CD321 Rabbit pAb

Catalog No.: A23909

Basic Information

Observed MW

36-41kDa

Calculated MW

32kDa

Category

Primary antibody

Applications

WB, ELISA

Cross-Reactivity

Human, Mouse, Rat

Background

Predicted to enable PDZ domain binding activity; integrin binding activity; and protein homodimerization activity. Involved in intestinal absorption; regulation of cytokine production; and regulation of membrane permeability. Acts upstream of or within cell adhesion and epithelial cell differentiation. Located in bicellular tight junction. Is expressed in several structures, including 4-8 cell stage embryo; alimentary system; respiratory system; sensory organ; and urinary system. Human ortholog(s) of this gene implicated in hypertension. Orthologous to human F11R (F11 receptor).

Recommended Dilutions

WB 1:500 - 1:1000

ELISA Recommended starting concentration is 1 µg/mL. Please optimize the concentration based on your specific assay requirements.

Immunogen Information

Gene ID

16456

Swiss Prot

Q92993

Immunogen

Recombinant protein (or fragment). This information is considered to be commercially sensitive.

Synonyms

JAM; Jcam; JAM-1; JAM-A; Jcam1; Ly106; ESTM33; 9130004G24; JAM-A/CD321

Contact

☎ | 400-999-6126

✉ | cn.market@abclonal.com.cn

🌐 | www.abclonal.com.cn

Product Information

Source

Rabbit

Isotype

IgG

Purification

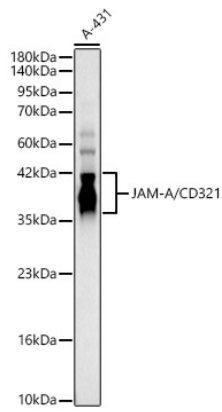
Affinity purification

Storage

Store at -20°C. Avoid freeze / thaw cycles.

Buffer: PBS containing 50% glycerol, preserved with proclin300 or sodium azide (as specified on the Certificate of Analysis), pH 7.3.

Validation Data



Western blot analysis of lysates from A-431 cells, using JAM-A/CD321 Rabbit pAb (A23909) at 1:700 dilution.

Secondary antibody: HRP-conjugated Goat anti-Rabbit IgG (H+L) (AS014) at 1:10000 dilution.

Lysates/proteins: 25µg per lane.

Blocking buffer: 3% nonfat dry milk in TBST.

Detection: ECL Basic Kit (RM00020).

Exposure time: 10s.