

CD271 Rabbit mAb

Catalog No.: A23913 **Recombinant**

Basic Information

Observed MW

60-75kDa

Calculated MW

45KDa

Category

Primary antibody

Applications

ELISA,WB,FC

Cross-Reactivity

Mouse, Rat

CloneNo number

ARC62149

Background

Enables death receptor activity; nerve growth factor binding activity; and small GTPase binding activity. Involved in several processes, including cellular glucose homeostasis; circadian regulation of gene expression; and dorsal aorta development. Acts upstream of or within several processes, including hair follicle morphogenesis; nervous system development; and regulation of signal transduction. Located in several cellular components, including cell surface; cell-cell junction; and postsynaptic density. Is expressed in several structures, including alimentary system; genitourinary system; integumental system; nervous system; and sensory organ. Human ortholog(s) of this gene implicated in Alzheimer's disease and mental depression. Orthologous to human NGFR (nerve growth factor receptor).

Recommended Dilutions

WB	1:500 - 1:1000
FC	1:100 - 1:500

Immunogen Information

Gene ID

18053

Swiss Prot

Q9Z0W1

Immunogen

Recombinant fusion protein containing a sequence corresponding to amino acids 32-254 of mouse CD271 (NP_150086.2).

Synonyms

p75; LNGFR; p75NTR; p75NGFR; Tnfrsf16; CD271

Contact

☎ | 400-999-6126

✉ | cn.market@abclonal.com.cn

🌐 | www.abclonal.com.cn

Product Information

Source

Rabbit

Isotype

IgG

Purification

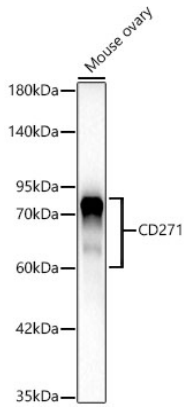
Affinity purification

Storage

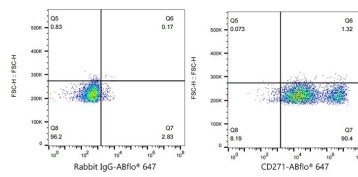
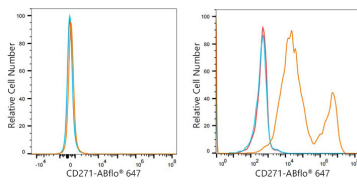
Store at -20°C. Avoid freeze / thaw cycles.

Buffer: PBS with 0.05% proclin300,0.05% BSA,50% glycerol,pH7.3.

Validation Data



Western blot analysis of Mouse ovary, using CD271 Rabbit mAb (A23913) at 1:1000 dilution.
 Secondary antibody: HRP Goat Anti-Rabbit IgG (H+L) (AS014) at 1:10000 dilution.
 Lysates/proteins: 25µg per lane.
 Blocking buffer: 3% nonfat dry milk in TBST.
 Detection: ECL Basic Kit (RM00020).
 Exposure time: 30s.



Flow cytometry: 1×10^6 293F cells (negative control, Left) and 293F(Transfection) cells (Right) were surface-stained with CD271/NGFR Rabbit mAb(A23913, 2µg/mL, orange line) or ABflo® 647 Rabbit IgG isotype control (A22070, 2µg/mL, blue line), followed by Alexa Fluor® 647 conjugated goat anti-rabbit pAb(1:200 dilution) staining. Non-fluorescently stained cells were used as blank control (red line).

Flow cytometry: 1×10^6 293F(Transfection) cells cells were surface-stained with ABflo® 647 Rabbit IgG isotype control (A22070, 2 µg/mL, left) or CD271/NGFR Rabbit mAb(A23913, 2 µg/mL, right).