

# Pro-MMP9 Rabbit mAb

Catalog No.: A23919 **Recombinant** **1 Publications**

## Basic Information

### Observed MW

40kDa

### Calculated MW

80KDa

### Category

Primary antibody

### Applications

WB,ELISA

### Cross-Reactivity

Mouse

### CloneNo number

ARC62081

## Background

This gene encodes a member of the matrix metalloproteinase family of extracellular matrix-degrading enzymes that are involved in tissue remodeling, wound repair, progression of atherosclerosis and tumor invasion. The encoded preproprotein undergoes proteolytic processing to generate a mature, zinc-dependent endopeptidase enzyme that degrades collagens of type IV, V and XI, and elastin. Mice lacking the encoded protein exhibit an abnormal pattern of skeletal growth plate vascularization and ossification, reduced keratinocyte hyperproliferation at all neoplastic stages, a decreased incidence of invasive tumors, and resistance to experimental autoimmune encephalomyelitis.

## Recommended Dilutions

**WB** 1:1000 - 1:10000

**ELISA** Recommended starting concentration is 1 µg/mL. Please optimize the concentration based on your specific assay requirements.

## Immunogen Information

### Gene ID

17395

### Swiss Prot

P41245

### Immunogen

Recombinant fusion protein containing a sequence corresponding to amino acids 20-107 of mouse MMP9(NP\_038627.1).

### Synonyms

Clg4b; Gel B; MMP-9; B/MMP9; pro-MMP-9; Pro-MMP9

## Contact

☎ | 400-999-6126

✉ | [cn.market@abclonal.com.cn](mailto:cn.market@abclonal.com.cn)

🌐 | [www.abclonal.com.cn](http://www.abclonal.com.cn)

## Product Information

### Source

Rabbit

### Isotype

IgG

### Purification

Affinity purification

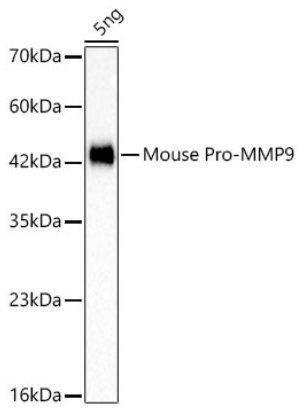
### Storage

Store at -20°C. Avoid freeze / thaw cycles.

Buffer: PBS with 0.05% proclin300,0.05% BSA,50% glycerol,pH7.3.

## Validation Data

---



Western blot analysis of lysates from 5ng Mouse Pro-MMP9 protein, using Pro-MMP9 Rabbit mAb (A23919) at 1:1000 dilution.

Secondary antibody: HRP-conjugated Goat anti-Rabbit IgG (H+L) (AS014) at 1:10000 dilution.

Lysates/proteins: 25µg per lane.

Blocking buffer: 3% nonfat dry milk in TBST.

Detection: ECL Basic Kit (RM00020).

Exposure time: 0.3s.