

LH(CG/LHB) Rabbit mAb

Catalog No.: A23921 **Recombinant**

Basic Information

Observed MW

18kDa

Calculated MW

13kDa/15kDa

Category

Primary antibody

Applications

WB, IHC-P, ELISA

Cross-Reactivity

Human

CloneNo number

ARC62336

Background

The four human glycoprotein hormones chorionic gonadotropin (CG), luteinizing hormone (LH), follicle stimulating hormone (FSH), and thyroid stimulating hormone (TSH) are dimers consisting of alpha and beta subunits that are associated noncovalently. The alpha subunits of these hormones are identical, however, their beta chains are unique and confer biological specificity. The protein encoded by this gene is the alpha subunit and belongs to the glycoprotein hormones alpha chain family. Two transcript variants encoding different isoforms have been found for this gene.

Recommended Dilutions

WB 1:1000 - 1:6000

IHC-P 1:10000 - 1:50000

ELISA Recommended starting concentration is 1 µg/mL. Please optimize the concentration based on your specific assay requirements.

Immunogen Information

Gene ID

1081/3972

Swiss Prot

P01215/P01229

Immunogen

A synthetic peptide corresponding to a sequence corresponding to amino acids 25-116 of human CGA(NP_000726.1) and amino acids 21-141 of human LHB(NP_000885.1).

Synonyms

HCG; LHA; FSHA; GPA1; GPHa; TSHA; GPHA1; CG-ALPHA; LH(CG/LHB)

Contact

☎ | 400-999-6126

✉ | cn.market@abclonal.com.cn

🌐 | www.abclonal.com.cn

Product Information

Source

Rabbit

Isotype

IgG

Purification

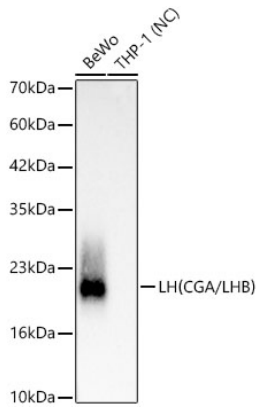
Affinity purification

Storage

Store at -20°C. Avoid freeze / thaw cycles.

Buffer: PBS with 0.05% proclin300, 0.05% BSA, 50% glycerol, pH7.3.

Validation Data



Western blot analysis of lysates from BEWO cells, using LH(CG/LHB) Rabbit mAb (A23921) at 1:1000 dilution.

Secondary antibody: HRP-conjugated Goat anti-Rabbit IgG (H+L) (AS014) at 1:10000 dilution.

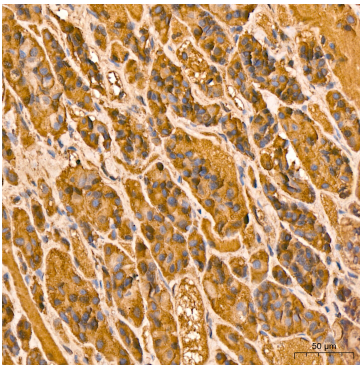
Lysates/proteins: 25µg per lane.

Blocking buffer: 3% nonfat dry milk in TBST.

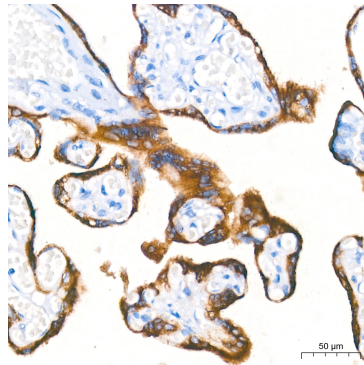
Detection: ECL Basic Kit (RM00020).

Negative control (NC): THP-1

Exposure time: 1s.



Immunohistochemistry analysis of paraffin-embedded Human pituitary gland tissue using LH(CG/LHB) Rabbit mAb (A23921) at a dilution of 1:16000 (40x lens). High pressure antigen retrieval performed with 0.01M Citrate Buffer (pH 6.0) prior to IHC staining.



Immunohistochemistry analysis of paraffin-embedded Human placenta tissue using LH(CG/LHB) Rabbit mAb (A23921) at a dilution of 1:16000 (40x lens). High pressure antigen retrieval performed with 0.01M Citrate Buffer (pH 6.0) prior to IHC staining.