

IFN gamma Rabbit PolymAb®

Catalog No.: A23925-PM

Basic Information

Observed MW

17kDa/50-55kDa

Calculated MW

18kDa

Category

Primary antibody

Applications

WB,ELISA

Cross-Reactivity

Human, Rat

Background

Predicted to enable cytokine activity. Involved in several processes, including negative regulation of cell population proliferation; positive regulation of NMDA glutamate receptor activity; and positive regulation of macromolecule metabolic process. Located in several cellular components, including extracellular space; neuron projection; and perikaryon. Used to study several diseases, including Chagas disease; allergic conjunctivitis; allergic rhinitis; renal fibrosis; and ureteral obstruction. Biomarker of several diseases, including abdominal aortic aneurysm; autoimmune thyroiditis; pulpitis; tongue squamous cell carcinoma; and visual epilepsy. Human ortholog(s) of this gene implicated in several diseases, including ataxia telangiectasia; autoimmune disease (multiple); eczema herpeticum; factor VIII deficiency; and leukemia (multiple). Orthologous to human IFNG (interferon gamma).

Recommended Dilutions

WB 1:500 - 1:2000

ELISA Recommended starting concentration is 1 µg/mL. Please optimize the concentration based on your specific assay requirements.

Immunogen Information

Gene ID

3458/25712

Swiss Prot

P01579/P01581

Immunogen

Recombinant protein of human/rat IFN gamma.

Synonyms

If2f; IFNG2

Contact

☎ | 400-999-6126

✉ | cn.market@abclonal.com.cn

🌐 | www.abclonal.com.cn

Product Information

Source

Rabbit

Isotype

IgG

Purification

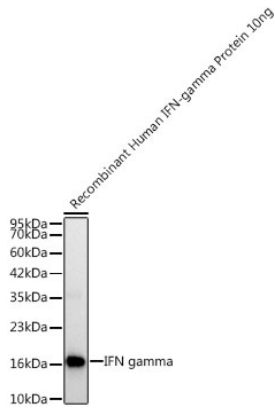
Affinity purification

Storage

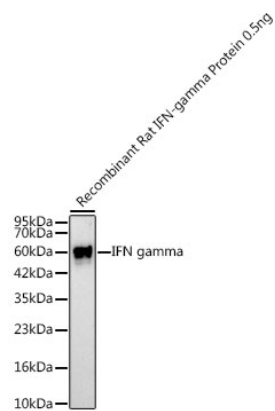
Store at -20°C. Avoid freeze / thaw cycles.

Buffer: PBS with 0.05% proclin300,0.05% BSA,50% glycerol,pH7.3.

Validation Data



Western blot analysis of Recombinant Human IFN-gamma Protein (RP01038), using IFN gamma Rabbit PolymAb® (A23925-PM) at 1:1000 dilution.
Secondary antibody: HRP-conjugated Goat anti-Rabbit IgG (H+L) (AS014) at 1:10000 dilution.
Lysates/proteins: 10 ng per lane.
Blocking buffer: 3% nonfat dry milk in TBST.
Detection: ECL Basic Kit (RM00020).
Exposure time: 15s.



Western blot analysis of Recombinant rat IFN-gamma Protein (RP01075), using IFN gamma Rabbit PolymAb® (A23925-PM) at 1:1000 dilution.
Secondary antibody: HRP-conjugated Goat anti-Rabbit IgG (H+L) (AS014) at 1:10000 dilution.
Lysates/proteins: 0.5 ng per lane.
Blocking buffer: 3% nonfat dry milk in TBST.
Detection: ECL Basic Kit (RM00020).
Exposure time: 180s.