

# Connexin 43 Rabbit PolymAb®

Catalog No.: A23928

## Basic Information

### Observed MW

Refer to figures

### Calculated MW

43kDa

### Category

Primary antibody

### Applications

ELISA, WB, IF/ICC

### Cross-Reactivity

Human, Mouse, Rat

### CloneNo number

ARC58819\_ARC58810

## Background

This gene is a member of the connexin gene family. The encoded protein is a component of gap junctions, which are composed of arrays of intercellular channels that provide a route for the diffusion of low molecular weight materials from cell to cell. The encoded protein is the major protein of gap junctions in the heart that are thought to have a crucial role in the synchronized contraction of the heart and in embryonic development. A related intronless pseudogene has been mapped to chromosome 5. Mutations in this gene have been associated with oculodentodigital dysplasia, autosomal recessive craniometaphyseal dysplasia and heart malformations.

## Recommended Dilutions

<b>WB</b>	1:1000 - 1:5000
<b>IF/ICC</b>	1:50 - 1:200

## Immunogen Information

### Gene ID

2697

### Swiss Prot

P17302

### Immunogen

Recombinant protein of human Connexin 43.

### Synonyms

HSS; CMDR; CX43; EKVP; GJAL; ODDD; AVSD3; EKVP3; HLHS1; PPKCA

## Contact

☎ | 400-999-6126

✉ | [cn.market@abclonal.com.cn](mailto:cn.market@abclonal.com.cn)

🌐 | [www.abclonal.com.cn](http://www.abclonal.com.cn)

## Product Information

### Source

Rabbit

### Isotype

IgG

### Purification

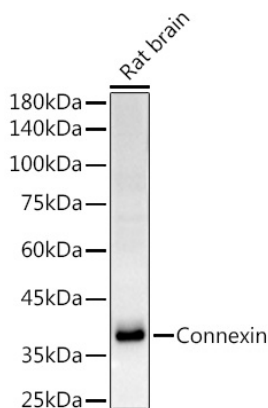
Affinity purification

### Storage

Store at -20°C. Avoid freeze / thaw cycles.

Buffer: PBS with 0.05% proclin300, 0.05% BSA, 50% glycerol, pH7.3.

## Validation Data



Western blot analysis of extracts from Rat brain ,using Connexin 43 Rabbit PolymAb® (A23928) at 1:2000 dilution.

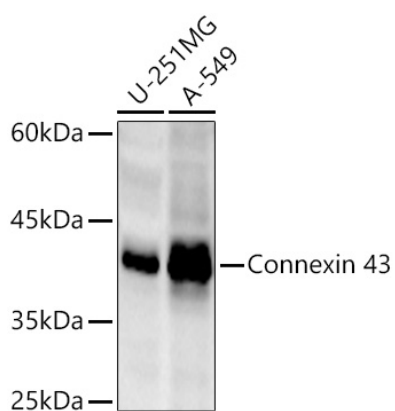
Secondary antibody: HRP Goat Anti-Rabbit IgG (H+L) (AS014) at 1:10000 dilution.

Lysates/proteins: 25µg per lane.

Blocking buffer: 3% nonfat dry milk in TBST.

Detection: ECL Basic Kit (RM00020).

Exposure time: 5s.



Western blot analysis of various lysates ,using Connexin 43 Rabbit PolymAb® (A23928) at 1:2000 dilution.

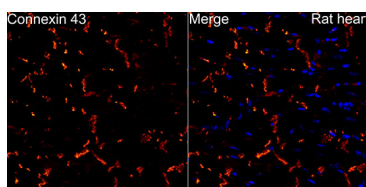
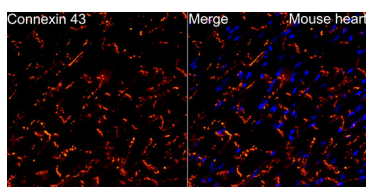
Secondary antibody: HRP Goat Anti-Rabbit IgG (H+L) (AS014) at 1:10000 dilution.

Lysates/proteins: 25µg per lane.

Blocking buffer: 3% nonfat dry milk in TBST.

Detection: ECL Basic Kit (RM00020).

Exposure time: 60s.



Perform high pressure antigen retrieval with 10 mM citrate buffer pH 6.0 before commencing with IF staining protocol. Immunofluorescence analysis of mouse heart using Connexin 43 Rabbit PolymAb® (A23928) at dilution of 1:100 (40x lens). Blue: DAPI for nuclear staining.

Perform high pressure antigen retrieval with 10 mM citrate buffer pH 6.0 before commencing with IF staining protocol. Immunofluorescence analysis of rat heart using Connexin 43 Rabbit PolymAb® (A23928) at dilution of 1:100 (40x lens). Blue: DAPI for nuclear staining.