

# MonoMethyl-Histone H3-K36 Rabbit mAb

Catalog No.: A23944 **Recombinant**

## Basic Information

### Observed MW

17kDa

### Calculated MW

15kDa

### Category

Primary antibody

### Applications

WB,DB,IP,ELISA,ChIP

### Cross-Reactivity

Human, Mouse, Rat, Other (Wide Range Predicted)

### CloneNo number

ARC61490

## Recommended Dilutions

**WB** 1:1000 - 1:5000

**DB** 1:1000 - 1:5000

**IP** 0.5µg-4µg antibody for  
200µg-400µg extracts of  
whole cells

**ELISA** Recommended starting  
concentration is 1 µg/mL.  
Please optimize the  
concentration based on  
your specific assay  
requirements.

**ChIP** 5µg antibody for  
5µg-10µg of Chromatin

## Contact

☎ | 400-999-6126

✉ | [cn.market@abclonal.com.cn](mailto:cn.market@abclonal.com.cn)

## Background

Histones are basic nuclear proteins that are responsible for the nucleosome structure of the chromosomal fiber in eukaryotes. This structure consists of approximately 146 bp of DNA wrapped around a nucleosome, an octamer composed of pairs of each of the four core histones (H2A, H2B, H3, and H4). The chromatin fiber is further compacted through the interaction of a linker histone, H1, with the DNA between the nucleosomes to form higher order chromatin structures. This gene is intronless and encodes a replication-dependent histone that is a member of the histone H3 family. Transcripts from this gene lack polyA tails; instead, they contain a palindromic termination element. This gene is found in the large histone gene cluster on chromosome 6p22-p21.3.

## Immunogen Information

### Gene ID

8290/8350

### Swiss Prot

Q16695/P68431

### Immunogen

A synthetic monomethylated peptide around K36 of human histone H3 (NP\_003520.1).

### Synonyms

H3/A; H3C2; H3C3; H3C4; H3C6; H3C7; H3C8; H3FA; H3C10; H3C11; H3C12; HIST1H3A; MonoMethyl-Histone H3-K36

## Product Information

### Source

Rabbit

### Isotype

IgG

### Purification

Affinity purification

### Storage

Store at -20°C. Avoid freeze / thaw cycles.

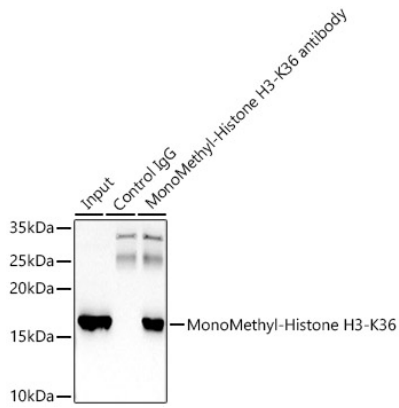
Buffer: PBS with 0.05% proclin300,0.05% BSA,50% glycerol,pH7.3.



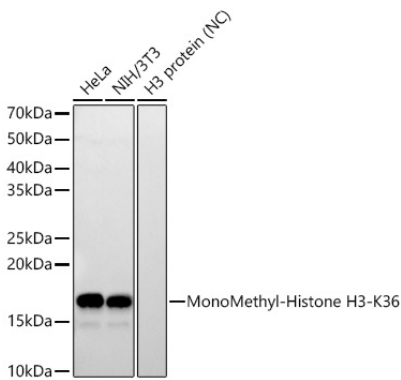
| [www.abclonal.com.cn](http://www.abclonal.com.cn)

---

## Validation Data



Immunoprecipitation analysis of 600ug extracts of HeLa cells using 5ug MonoMethyl-Histone H3-K36 Rabbit mAb (A23944). Western blot was performed from the immunoprecipitate using MonoMethyl-Histone H3-K36 Rabbit mAb (A23944) at a dilution of 1:5000.



Western blot analysis of various lysates, using MonoMethyl-Histone H3-K36 Rabbit mAb (A23944) at 1:2000 dilution.

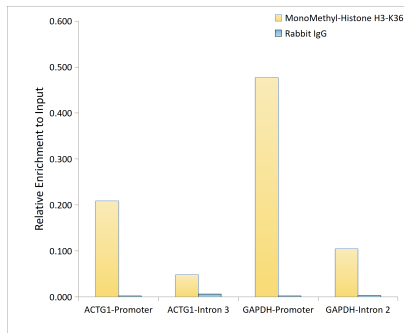
Secondary antibody: HRP-conjugated Goat anti-Rabbit IgG (H+L) (AS014) at 1:10000 dilution.  
Lysates/proteins: 25µg per lane.

Blocking buffer: 3% nonfat dry milk in TBST.

Detection: ECL Basic Kit (RM00020).

Negative control (NC): H3 protein

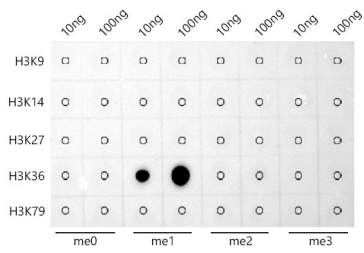
Exposure time: 60s.



Chromatin immunoprecipitation analysis of extracts of MCF7 cells, using MonoMethyl-Histone H3-K36 Rabbit mAb antibody (A23944) and rabbit IgG. The amount of immunoprecipitated DNA was checked by quantitative PCR. Histogram was constructed by the ratios of the immunoprecipitated DNA to the input.

## Validation Data

---



Dot-blot analysis of all sorts of peptides using MonoMethyl-Histone H3-K36 Rabbit mAb (A23944) at 1:2000 dilution.