

CD22 Rabbit mAb

Catalog No.: A23945 **Recombinant**

Basic Information

Observed MW

140kDa

Calculated MW

89kDa/93kDa/97kDa

Category

Primary antibody

Applications

WB,IF/ICC,ELISA

Cross-Reactivity

Mouse

CloneNo number

ARC62719

Background

Enables CD4 receptor binding activity; protein phosphatase binding activity; and sialic acid binding activity. Involved in several processes, including negative regulation of calcium-mediated signaling; negative regulation of immunoglobulin production; and regulation of B cell proliferation. Located in external side of plasma membrane and neuronal cell body membrane. Is integral component of plasma membrane. Is expressed in several structures, including alimentary system; brain; hemolymphoid system gland; liver and biliary system; and reproductive system. Orthologous to human CD22 (CD22 molecule).

Recommended Dilutions

WB 1:1000 - 1:4000

IF/ICC 1:200 - 1:800

ELISA Recommended starting concentration is 1 µg/mL. Please optimize the concentration based on your specific assay requirements.

Immunogen Information

Gene ID

12483

Swiss Prot

P35329

Immunogen

Recombinant fusion protein containing a sequence corresponding to amino acids 22-151 of mouse CD22(NP_033975.3)

Synonyms

Lyb8; Lyb-8; A530093D23; CD22

Contact

☎ | 400-999-6126

✉ | cn.market@abclonal.com.cn

🌐 | www.abclonal.com.cn

Product Information

Source

Rabbit

Isotype

IgG

Purification

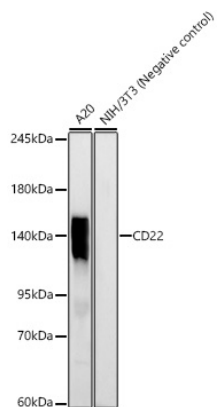
Affinity purification

Storage

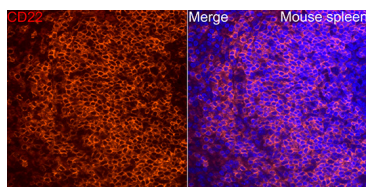
Store at -20°C. Avoid freeze / thaw cycles.

Buffer: PBS with 0.05% proclin300,0.05% BSA,50% glycerol,pH7.3.

Validation Data



Western blot analysis of various lysates, using CD22 Rabbit mAb (A23945) at 1:1000 dilution.
Secondary antibody: HRP-conjugated Goat anti-Rabbit IgG (H+L) (AS014) at 1:10000 dilution.
Lysates/proteins: 25µg per lane.
Blocking buffer: 3% nonfat dry milk in TBST.
Detection: ECL Basic Kit (RM00020).
Exposure time: 30s.



Perform high pressure antigen retrieval with 10 mM citrate buffer pH 6.0 before commencing with IF staining protocol. Immunofluorescence analysis of paraffin-embedded mouse spleen using CD22 Rabbit mAb (A23945) at dilution of 1:200 (40x lens). Secondary antibody: Cy3-conjugated Goat anti-Rabbit IgG (H+L) (AS007) at 1:500 dilution. Blue: DAPI for nuclear staining.