

# LAMP1/CD107a Rabbit mAb

Catalog No.: A23947 **Recombinant**

## Basic Information

### Observed MW

### Calculated MW

43kDa

### Category

Primary antibody

### Applications

ELISA, WB, IF/ICC, FC

### Cross-Reactivity

Mouse

### CloneNo number

ARC61633

## Background

Enables protein domain specific binding activity. Involved in protein stabilization. Located in several cellular components, including cytoplasmic vesicle; sarcolemma; and vacuole. Is expressed in several structures, including 1-cell stage embryo; central nervous system; craniocervical region bone; extraembryonic component; and gut. Orthologous to human LAMP1 (lysosomal associated membrane protein 1).

## Recommended Dilutions

<b>WB</b>	1:2000 - 1:6000
<b>IF/ICC</b>	1:50 - 1:200
<b>FC</b>	1:500 - 1:1000

## Immunogen Information

### Gene ID

16783

### Swiss Prot

P11438

### Immunogen

Recombinant fusion protein containing a sequence corresponding to amino acids 208-363 of mouse LAMP1/CD107a[NP\_034814.2].

### Synonyms

P2B; Perk; LGP-A; CD107a; Lamp-1; LGP-120; LAMP1/CD107a

## Contact

☎ | 400-999-6126

✉ | [cn.market@abclonal.com.cn](mailto:cn.market@abclonal.com.cn)

🌐 | [www.abclonal.com.cn](http://www.abclonal.com.cn)

## Product Information

### Source

Rabbit

### Isotype

IgG

### Purification

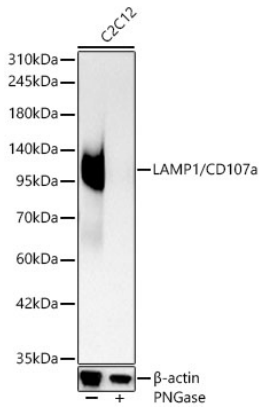
Affinity purification

### Storage

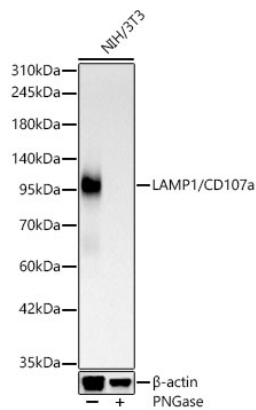
Store at -20°C. Avoid freeze / thaw cycles.

Buffer: PBS with 0.05% proclin300, 0.05% BSA, 50% glycerol, pH7.3.

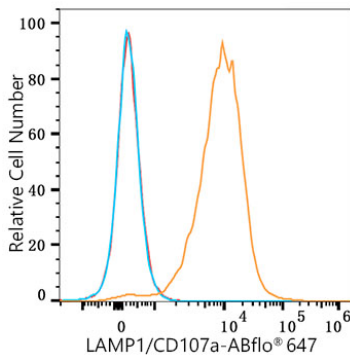
## Validation Data



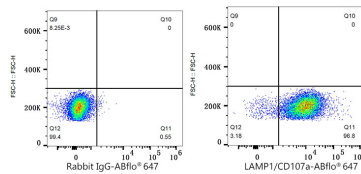
Western blot analysis of lysates from C2C12 cells, using LAMP1/CD107a Rabbit mAb (A23947) at 1:5000 dilution. C2C12 cells were treated with PNGase F (1 $\mu$ L for 3h) at 37°C.  
 Secondary antibody: HRP-conjugated Goat anti-Rabbit IgG (H+L) (AS014) at 1:10000 dilution.  
 Lysates/proteins: 25 $\mu$ g per lane.  
 Blocking buffer: 3% nonfat dry milk in TBST.  
 Detection: ECL Basic Kit (RM00020).  
 Exposure time: 15s.



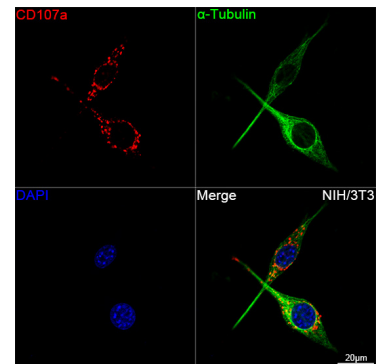
Western blot analysis of lysates from NIH/3T3 cells, using LAMP1/CD107a Rabbit mAb (A23947) at 1:5000 dilution. NIH/3T3 cells were treated with PNGase F (1 $\mu$ L for 3h) at 37°C.  
 Secondary antibody: HRP-conjugated Goat anti-Rabbit IgG (H+L) (AS014) at 1:10000 dilution.  
 Lysates/proteins: 25 $\mu$ g per lane.  
 Blocking buffer: 3% nonfat dry milk in TBST.  
 Detection: ECL Basic Kit (RM00020).  
 Exposure time: 15s.



Flow cytometry: 1X10<sup>6</sup> RAW264.7 cells were surface-stained with LAMP1/CD107a Rabbit mAb (A23947, 2  $\mu$ g/mL, orange line) or ABflo® 647 Rabbit IgG isotype control (A22070, 5  $\mu$ l/Test, blue line), followed by Alexa Fluor® 647 conjugated goat anti-rabbit pAb staining. Non-fluorescently stained RAW264.7 cells were used as blank control (red line).



Flow cytometry: 1X10<sup>6</sup> RAW264.7 cells were surface-stained with ABflo® 647 Rabbit IgG isotype control (A22070, 5  $\mu$ l/Test, left) or LAMP1/CD107a Rabbit mAb (A23947, 2  $\mu$ g/mL, right).



Confocal imaging of NIH/3T3 cells using LAMP1/CD107a Rabbit mAb (A23947, dilution 1:200) (Red). The cells were counterstained with  $\alpha$ -Tubulin Mouse mAb (AC012, dilution 1:400) (Green). DAPI was used for nuclear staining (blue). Objective: 100x.