

CD140b/PDGFRB Rabbit mAb

Catalog No.: A23952 **Recombinant**

Basic Information

Observed MW

190kDa

Calculated MW

37kDa/123kDa

Category

Primary antibody

Applications

ELISA,WB,FC

Cross-Reactivity

Human

CloneNo number

ARC59959

Background

This gene encodes a cell surface tyrosine kinase receptor for members of the platelet-derived growth factor family. These growth factors are mitogens for cells of mesenchymal origin. The identity of the growth factor bound to a receptor monomer determines whether the functional receptor is a homodimer or a heterodimer, composed of both platelet-derived growth factor receptor alpha and beta polypeptides. This gene is flanked on chromosome 5 by the genes for granulocyte-macrophage colony-stimulating factor and macrophage-colony stimulating factor receptor; all three genes may be implicated in the 5-q syndrome. A translocation between chromosomes 5 and 12, that fuses this gene to that of the translocation, ETV6, leukemia gene, results in chronic myeloproliferative disorder with eosinophilia.

Recommended Dilutions

WB	1:1000 - 1:5000
FC	1:500 - 1:1000

Immunogen Information

Gene ID

5159

Swiss Prot

P09619

Immunogen

Recombinant fusion protein containing a sequence corresponding to amino acids 33-530 of human CD140b/PDGFRB(NP_002600.1).

Synonyms

PDGFRB; CD140B; IBGC4; IMF1; JTK12; KOGS; PDGFR; PDGFR-1; PDGFR1; PENTT; platelet-derived growth factor receptor beta; CD140b/PDGFRB

Contact

☎ | 400-999-6126

✉ | cn.market@abclonal.com.cn

🌐 | www.abclonal.com.cn

Product Information

Source

Rabbit

Isotype

IgG

Purification

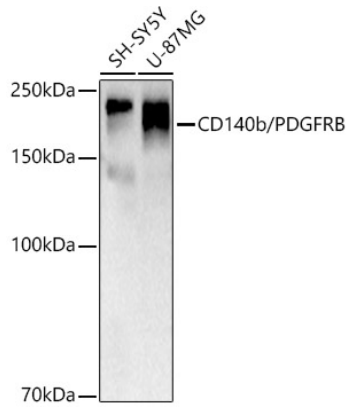
Affinity purification

Storage

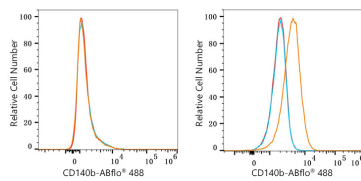
Store at -20°C. Avoid freeze / thaw cycles.

Buffer: PBS with 0.05% proclin300,0.05% BSA,50% glycerol,pH7.3.

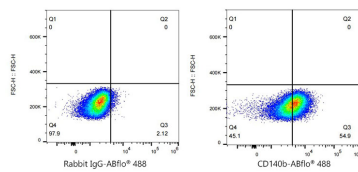
Validation Data



Western blot analysis of various lysates, using CD140b/PDGFRB Rabbit mAb (A23952) at 1:2000 dilution. Secondary antibody: HRP Goat Anti-Rabbit IgG (H+L) (AS014) at 1:10000 dilution. Lysates/proteins: 25ug per lane. Blocking buffer: 3% nonfat dry milk in TBST. Detection: ECL Basic Kit (RM00020). Exposure time: 30s.



Flow cytometry: 1×10^6 MCF7 cells (negative control, left) and U-87MG (right) were surface-stained with ABflo® 488 Rabbit anti-Human CD140b/PDGFRB mAb (A23952, 2 $\mu\text{g}/\text{mL}$, orange line) or ABflo® 488 Rabbit IgG isotype control (A22069, 2 $\mu\text{g}/\text{mL}$, blue line). Non-fluorescently stained cells were used as blank control (red line).



Flow cytometry: 1×10^6 U-87MG cells were surface-stained with ABflo® 488 Rabbit IgG isotype control (A22069, 2 $\mu\text{g}/\text{mL}$, left) or CD140b/PDGFRB Rabbit mAb (A23952, 2 $\mu\text{g}/\text{mL}$, right).