

CD8A Rabbit mAb

Catalog No.: A23953 **Recombinant**

Basic Information

Observed MW

35-42kDa

Calculated MW

27kDa

Category

Primary antibody

Applications

WB,FC,ELISA

Cross-Reactivity

Mouse

CloneNo number

ARC60676

Background

Enables identical protein binding activity. Acts upstream of or within several processes, including cytotoxic T cell differentiation; defense response to virus; and positive regulation of calcium-mediated signaling. Located in external side of plasma membrane. Is expressed in several structures, including endocrine gland; exocrine gland; genitourinary system; gut; and hemolymphoid system gland. Orthologous to human CD8A (CD8a molecule).

Recommended Dilutions

WB 1:1000 - 1:4000

FC 1:100 - 1:500

ELISA Recommended starting concentration is 1 µg/mL. Please optimize the concentration based on your specific assay requirements.

Immunogen Information

Gene ID

12525

Swiss Prot

P01731

Immunogen

Recombinant fusion protein containing a sequence corresponding to amino acids 28-196 of mouse CD8A(NP_001074579.1)

Synonyms

Eukaryota; Metazoa; Chordata; Craniata; Vertebrata; Euteleostomi; Mammalia; Eutheria; Euarchontoglires; Glires; Rodentia; Myomorpha; Muroidea; Muridae; Murinae; Mus; CD8A

Contact

☎ | 400-999-6126

✉ | cn.market@abclonal.com.cn

🌐 | www.abclonal.com.cn

Product Information

Source

Rabbit

Isotype

IgG

Purification

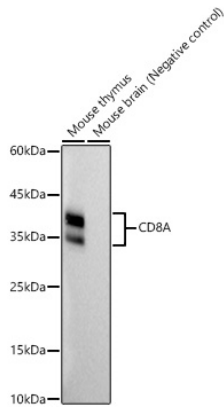
Affinity purification

Storage

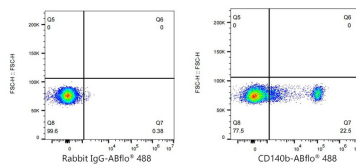
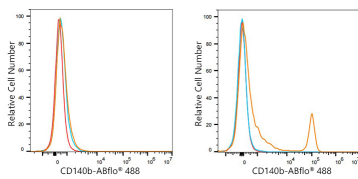
Store at -20°C. Avoid freeze / thaw cycles.

Buffer: PBS with 0.05% proclin300,0.05% BSA,50% glycerol,pH7.3.

Validation Data



Western blot analysis of various lysates, using CD8A Rabbit mAb (A23953) at 1:1000 dilution.
 Secondary antibody: HRP-conjugated Goat anti-Rabbit IgG (H+L) (AS014) at 1:10000 dilution.
 Lysates/proteins: 25µg per lane.
 Blocking buffer: 3% nonfat dry milk in TBST.
 Detection: ECL Basic Kit (RM00020).
 Exposure time: 30s.



Flow cytometry: 1×10^6 RAW 264.7 cells (negative control, left) and C57BL/6 mouse Splenocytes (right) were surface-stained with CD8A Rabbit mAb (A23953, 2 µg/mL, orange line) or ABflo® 488 Rabbit IgG isotype control (A22069, 5 µl/Test, blue line), followed by Alexa Fluor® 488 conjugated goat anti-rabbit pAb staining. Non-fluorescently stained cells were used as blank control (red line).

Flow cytometry: 1×10^6 C57BL/6 mouse Splenocytes were surface-stained with ABflo® 488 Rabbit IgG isotype control (A22069, 5 µl/Test, left) or CD8A Rabbit mAb (A23953, 2 µg/mL, right).