

RAB5A Rabbit mAb

Catalog No.: A23955 **Recombinant**

Basic Information

Observed MW

27kDa

Calculated MW

22kDa/23kDa

Category

Primary antibody

Applications

WB,IHC-P,ELISA

Cross-Reactivity

Human, Mouse, Rat

CloneNo number

ARC62486

Background

RAB5A (RAB5A, member RAS oncogene family) is a protein-coding gene. Diseases associated with RAB5A include borna disease, and venezuelan equine encephalitis. GO annotations related to this gene include GDP binding and GTP binding. An important paralog of this gene is RAB20.

Recommended Dilutions

WB 1:1000 - 1:6000

IHC-P 1:200 - 1:2000

ELISA Recommended starting concentration is 1 µg/mL. Please optimize the concentration based on your specific assay requirements.

Immunogen Information

Gene ID

5868

Swiss Prot

P20339

Immunogen

A synthetic peptide corresponding to a sequence within amino acids 115-215 of human RAB5A (NP_004153.2).

Synonyms

RAB5A; RAB5; ras-related protein Rab-5A

Contact

☎ | 400-999-6126

✉ | cn.market@abclonal.com.cn

🌐 | www.abclonal.com.cn

Product Information

Source

Rabbit

Isotype

IgG

Purification

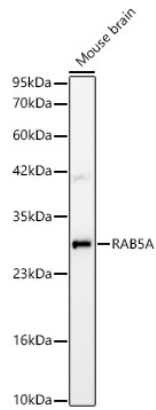
Affinity purification

Storage

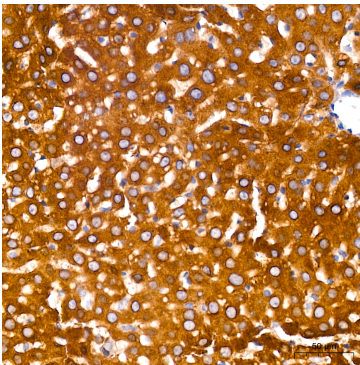
Store at -20°C. Avoid freeze / thaw cycles.

Buffer: PBS with 0.05% proclin300,0.05% BSA,50% glycerol,pH7.3.

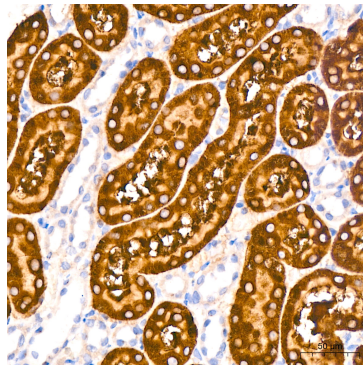
Validation Data



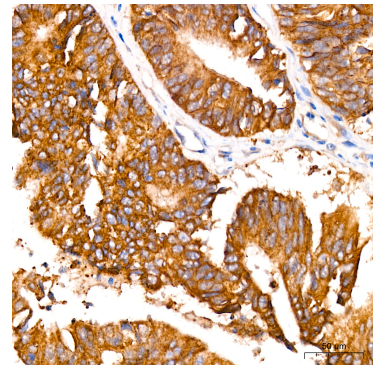
Western blot analysis of lysates from Mouse brain, using RAB5A Rabbit mAb (A23955) at 1:1000 dilution. Secondary antibody: HRP-conjugated Goat anti-Rabbit IgG (H+L) (AS014) at 1:10000 dilution. Lysates/proteins: 25µg per lane. Blocking buffer: 3% nonfat dry milk in TBST. Detection: ECL Basic Kit (RM00020). Exposure time: 10s.



Immunohistochemistry analysis of paraffin-embedded Rat liver using RAB5A Rabbit mAb (A23955) at dilution of 1:200 (40x lens). High pressure antigen retrieval performed with 0.01M Citrate Bufferr (pH 6.0) prior to IHC staining.



Immunohistochemistry analysis of paraffin-embedded Rat kidney using RAB5A Rabbit mAb (A23955) at dilution of 1:200 (40x lens). High pressure antigen retrieval performed with 0.01M Citrate Bufferr (pH 6.0) prior to IHC staining.



Immunohistochemistry analysis of paraffin-embedded Human colon carcinoma using RAB5A Rabbit mAb (A23955) at dilution of 1:200 (40x lens). High pressure antigen retrieval performed with 0.01M Citrate Bufferr (pH 6.0) prior to IHC staining.