

# IL-1RA Rabbit mAb

Catalog No.: A23956 **Recombinant** **3 Publications**

## Basic Information

### Observed MW

20 kDa

### Calculated MW

20 kDa

### Category

Primary antibody

### Applications

WB, ELISA

### Cross-Reactivity

Human, Mouse

### CloneNo number

ARC62499

## Background

Predicted to enable cytokine receptor binding activity. Acts upstream of or within insulin secretion and lipid metabolic process. Located in extracellular region and vesicle. Human ortholog(s) of this gene implicated in several diseases, including autoimmune disease (multiple); eye disease (multiple); kidney failure (multiple); lung disease (multiple); and vascular disease (multiple). Orthologous to human IL1RN (interleukin 1 receptor antagonist).

## Recommended Dilutions

**WB** 1:1000 - 1:5000

**ELISA** Recommended starting concentration is 1 µg/mL. Please optimize the concentration based on your specific assay requirements.

## Immunogen Information

### Gene ID

16181

### Swiss Prot

P25085

### Immunogen

Recombinant protein (or fragment). This information is considered to be commercially sensitive.

### Synonyms

IL-1ra; F630041P17Rik; IL-1RA

## Contact

☎ | 400-999-6126

✉ | [cn.market@abclonal.com.cn](mailto:cn.market@abclonal.com.cn)

🌐 | [www.abclonal.com.cn](http://www.abclonal.com.cn)

## Product Information

### Source

Rabbit

### Isotype

IgG

### Purification

Affinity purification

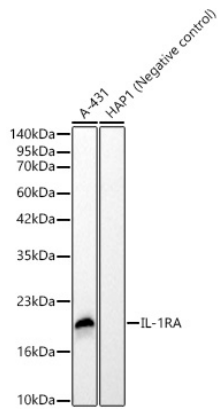
### Storage

Store at -20°C. Avoid freeze / thaw cycles.

Buffer: PBS containing 50% glycerol and 0.05% BSA, preserved with proclin300 or sodium azide (as specified on the Certificate of Analysis), pH 7.3.

## Validation Data

---



Western blot analysis of various lysates, using IL-1RA Rabbit mAb (A23956) at 1:2000 dilution.  
Secondary antibody: HRP-conjugated Goat anti-Rabbit IgG (H+L) (AS014) at 1:10000 dilution.  
Lysates/proteins: 25µg per lane.  
Blocking buffer: 3% nonfat dry milk in TBST.  
Detection: ECL Basic Kit (RM00020).  
Exposure time: 20s.