

HSP40 Rabbit mAb

Catalog No.: A23957

Recombinant

1 Publications

Basic Information

Observed MW

40kDa

Calculated MW

27kDa/38kDa

Category

Primary antibody

Applications

ELISA,WB,FC (intra)

Cross-Reactivity

Human, Mouse, Rat

CloneNo number

ARC62654

Background

This gene encodes a member of the DnaJ or Hsp40 (heat shock protein 40 kD) family of proteins. DNAJ family members are characterized by a highly conserved amino acid stretch called the 'J-domain' and function as one of the two major classes of molecular chaperones involved in a wide range of cellular events, such as protein folding and oligomeric protein complex assembly. The encoded protein is a molecular chaperone that stimulates the ATPase activity of Hsp70 heat-shock proteins in order to promote protein folding and prevent misfolded protein aggregation. Alternative splicing results in multiple transcript variants.

Recommended Dilutions

WB 1:500 - 1:1000**FC (intra)** 1:500 - 1:1000

Immunogen Information

Gene ID

3337

Swiss Prot

P25685

Immunogen

A synthetic peptide corresponding to a sequence within amino acids 241-340 of human DNAJB1/HSP40 (NP_006136.1).

Synonyms

DNAJB1; HSPF1; Hdj1; Hsp40; RSPH16B; Sis1; dnaJ homolog subfamily B member 1; HSP40

Contact

 | 400-999-6126 | cn.market@abclonal.com.cn | www.abclonal.com.cn

Product Information

Source

Rabbit

Isotype

IgG

Purification

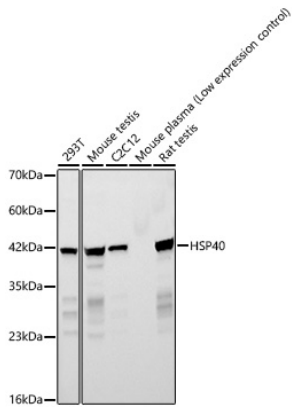
Affinity purification

Storage

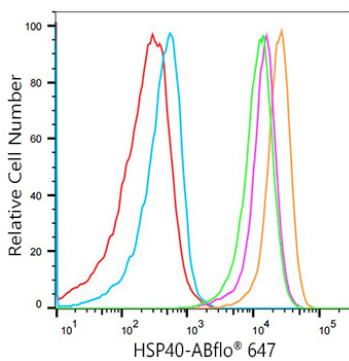
Store at -20°C. Avoid freeze / thaw cycles.

Buffer: PBS with 0.05% proclin300,0.05% BSA,50% glycerol,pH7.3.

Validation Data



Western blot analysis of various lysates, using HSP40 Rabbit mAb (A23957) at 1:1000 dilution.
Secondary antibody: HRP Goat Anti-Rabbit IgG (H+L) (AS014) at 1:10000 dilution.
Lysates/proteins: 25ug per lane.
Blocking buffer: 3% nonfat dry milk in TBST.
Detection: ECL Basic Kit (RM00020).
Exposure time: 45s.



Flow cytometry: 1×10^6 293T-HSP40-shRNA-1 cells (pink line) 293T-HSP40-shRNA-2 cells (green line) and 293T-scramble cells (orange line) were intracellularly-stained with HSP40 Rabbit mAb (A23957, 2 μ g/mL) or ABflo® 647 Rabbit IgG isotype control (A22070, 2 μ g/mL, blue line), followed by Alexa Fluor® 647 conjugated goat anti-rabbit pAb staining. Non-fluorescently stained cells were used as blank control (red line).