

Actin(Plant Specific) Rabbit mAb

Catalog No.: A23959 **Recombinant** **1 Publications**

Basic Information

Observed MW

42kDa

Calculated MW

42kDa

Category

Primary antibody

Applications

WB,ELISA

Cross-Reactivity

Widely Range,Oryza sativa,Arabidopsis thaliana

CloneNo number

ARC62861

Background

Actin is an ancient conserved protein that is encoded by multiple isoforms in multi-cellular organisms. There are eight functional actin genes in the Arabidopsis genome.

Recommended Dilutions

WB 1:10000 - 1:60000

ELISA Recommended starting concentration is 1 µg/mL. Please optimize the concentration based on your specific assay requirements.

Immunogen Information

Gene ID

Swiss Prot

Immunogen

A synthetic peptide corresponding to a sequence within amino acids 1-100 of Actin(Plant Specific)(NP_190236.1).

Synonyms

ACT12; Actin(Plant Specific)

Contact

☎ | 400-999-6126

✉ | cn.market@abclonal.com.cn

🌐 | www.abclonal.com.cn

Product Information

Source

Rabbit

Isotype

IgG

Purification

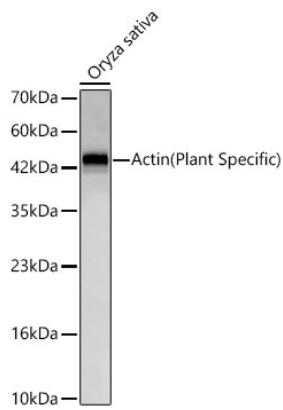
Affinity purification

Storage

Store at -20°C. Avoid freeze / thaw cycles.

Buffer: PBS with 0.05% proclin300,0.05% BSA,50% glycerol,pH7.3.

Validation Data



Western blot analysis of lysates from *Oryza sativa*, using Actin(Plant Specific) Rabbit mAb (A23959) at 1:10000 dilution.

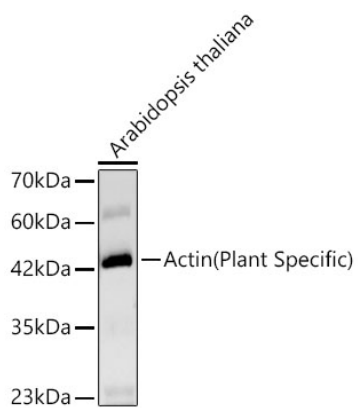
Secondary antibody: HRP-conjugated Goat anti-Rabbit IgG (H+L) (AS014) at 1:10000 dilution.

Lysates/proteins: 25µg per lane.

Blocking buffer: 3% nonfat dry milk in TBST.

Detection: ECL Basic Kit (RM00020).

Exposure time: 10s.



Western blot analysis of *Arabidopsis thaliana*, using Actin(Plant Specific) Rabbit mAb (A23959) at 1:10000 dilution.

Secondary antibody: HRP-conjugated Goat anti-Rabbit IgG (H+L) (AS014) at 1:10000 dilution.

Lysates/proteins: 25µg per lane.

Blocking buffer: 3% nonfat dry milk in TBST.

Detection: ECL Basic Kit (RM00020).

Exposure time: 60s.