

ABflo® 647 Rabbit anti-Mouse CD80 mAb

Catalog No.: A23966

Basic Information

Observed MW

Calculated MW

34kDa

Category

Primary antibody

Applications

FC

Cross-Reactivity

Mouse

CloneNo number

ARC61485-ABflo647

Conjugate

ABflo® 647. Ex:648nm. Em:664nm.

Recommended Dilutions

FC 5 µl per 10⁶ cells in
100 µl volume

Background

Predicted to enable coreceptor activity. Acts upstream of or within T cell costimulation; cellular response to lipopolysaccharide; and positive regulation of alpha-beta T cell proliferation. Located in external side of plasma membrane. Is expressed in heart ventricle and skin. Human ortholog(s) of this gene implicated in type 1 diabetes mellitus. Orthologous to human CD80 (CD80 molecule).

Immunogen Information

Gene ID

12519

Swiss Prot

Q00609

Immunogen

Recombinant fusion protein containing a sequence corresponding to amino acids 38-245 of mouse CD80(NP_033985.3).

Synonyms

B71; Ly53; TSA1; Cd28l; Ly-53; MIC17

Contact

☎ | 400-999-6126

✉ | cn.market@abclonal.com.cn

🌐 | www.abclonal.com.cn

Product Information

Source

Rabbit

Isotype

IgG

Purification

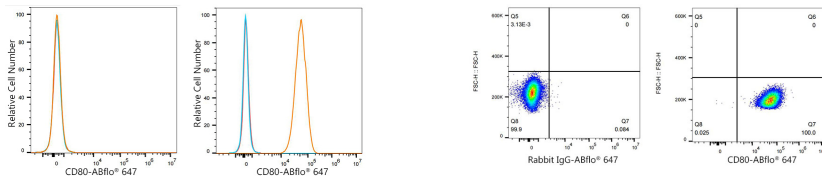
Affinity purification

Storage

Store at 2-8°C. Avoid freeze.

Buffer: PBS with 0.03% proclin300,0.2% BSA,pH7.3.

Validation Data



Flow cytometry: 1×10^6 Neuro-2a cells (negative control, left) and C2C12 cells (right) were surface-stained with CD80 Rabbit mAb (A23966, 5 μ l/Test, orange line) or ABflo® 647 Rabbit IgG isotype control (A22070, 5 μ l/Test, blue line), followed by Alexa Fluor® 647 conjugated goat anti-rabbit pAb (1:200 dilution) staining. Non-fluorescently stained cells were used as blank control (red line).

Flow cytometry: 1×10^6 C2C12 cells were surface-stained with ABflo® 647 Rabbit IgG isotype control (A22070, 5 μ l/Test, left) or ABflo® 647 Rabbit anti-Mouse CD80 mAb (A23966, 5 μ l/Test, right).