

ABflo® 647 Rabbit anti-Mouse CD201/EPCR mAb

Catalog No.: A23969

Basic Information

Observed MW

Calculated MW

27kDa

Category

Primary antibody

Applications

FC

Cross-Reactivity

Mouse

CloneNo number

ARC62043-ABflo647

Conjugate

ABflo® 647. Ex:648nm. Em:664nm.

Recommended Dilutions

FC 5 µl per 10⁶ cells in
100 µl volume

Background

Predicted to enable protein C-terminus binding activity. Predicted to be involved in negative regulation of coagulation. Predicted to act upstream of or within blood coagulation. Located in centrosome. Is expressed in several structures, including blastocyst; endocardial tissue; female reproductive system; liver; and vascular element. Orthologous to human PROCRCR (protein C receptor).

Immunogen Information

Gene ID

19124

Swiss Prot

Q64695

Immunogen

Recombinant fusion protein containing a sequence corresponding to amino acids 18-210 of mouse CD201/EPCR(NP_035301.2).

Synonyms

Ccca; Epcr; Ccd41

Contact

☎ | 400-999-6126

✉ | cn.market@abclonal.com.cn

🌐 | www.abclonal.com.cn

Product Information

Source

Rabbit

Isotype

IgG

Purification

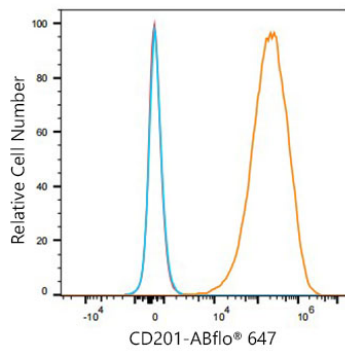
Affinity purification

Storage

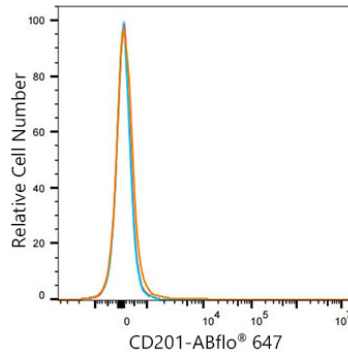
Store at 2-8°C. Avoid freeze.

Buffer: PBS with 0.03% proclin300,0.2% BSA,pH7.3.

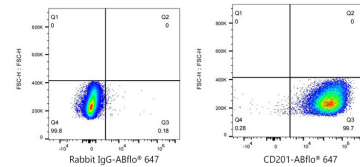
Validation Data



Flow cytometry: 1×10^6 bEnd.3 cells were surface-stained with ABflo® 647 Rabbit anti-Mouse CD201/EPCR mAb(A23969,5 μ l/Test,orange line) or ABflo® 647 Rabbit IgG isotype control (A22070,5 μ l/Test,blue line).Non-fluorescently stained bEnd.3 cells were used as blank control (red line).



Flow cytometry: 1×10^6 U266 cells(negative control) cells were surface-stained with ABflo® 647 Rabbit anti-Mouse CD201/EPCR mAb(A23969,5 μ l/Test,orange line) or ABflo® 647 Rabbit IgG isotype control (A22070,5 μ l/Test,blue line).Non-fluorescently stained U266 cells were used as blank control (red line).



Flow cytometry: 1×10^6 bEnd.3 cells were surface-stained with ABflo® 647 Rabbit IgG isotype control (A22070,5 μ l/Test,left) or ABflo® 647 Rabbit anti-Mouse CD201/EPCR mAb(A23969,5 μ l/Test,right).